

# Ready for Secondary School

## in Tower Hamlets 2023

Closing date for admissions is **31 October 2022**

Apply online at [www.towerhamlets.gov.uk/schooladmissions](http://www.towerhamlets.gov.uk/schooladmissions)  
or [www.eadmissions.org.uk](http://www.eadmissions.org.uk)





# Contents

---

## SECTION 1

• Foreword by the Corporate Director	3
• Visiting dates	4
• Important dates at a glance	6

---

## SECTION 2

• Apply online	7
• Children with education, health and care plan (EHCP)	8
• Summary of secondary transfer applications 2022	9
• A step-by-step guide to secondary transfer	10
• The Pan London Coordinated Admissions System	11
• Admissions policy and oversubscription criteria for Tower Hamlets community schools	12
• Criteria flowchart	14
• Questions and answers on moving to secondary school	15
• Before you apply – dos and don'ts	16

---

## SECTION 3

• Secondary schools and 14-19 provision in Tower Hamlets	17
• Bishop Challoner Catholic Boys' School*	18
• Bishop Challoner Catholic Girls' School*	20
• Bow School	22
• Canary Wharf College Crossharbour	24
• Central Foundation Girls' School	26
• George Green's School	28
• Langdon Park School	30
• London Enterprise Academy	32
• Morpeth School	34
• Mulberry Academy London Dock	36
• Mulberry Academy Shoreditch	38
• Mulberry School for Girls	40
• Mulberry Stepney Green Maths, Computing and Science College	42
• Oaklands School	44
• Stepney All Saints CofE Secondary School	46
• St Paul's Way Trust School	48
• Swanlea School	50
• Wapping High School	52
• East London Arts and Music College (16-19)	54
• London East Alternative Provision (LEAP)	56
• Mulberry University Technical College (UTC) (14-19)	58
• New City College - Tower Hamlets (14-19)	60
• South Quay College (14-16)	62

---

## SECTION 4

• Guide to applying online	64
• Secondary schools and registered independent secondary schools in Tower Hamlets	68
• Priority geographical areas for secondary transfer applications	69
• Useful contacts	70

Watch a video guide about secondary transfer and view our information film at [www.towerhamlets.gov.uk/secondaryadmissions](http://www.towerhamlets.gov.uk/secondaryadmissions)

# Foreword by the Corporate Director

# 1



Dear parent or carer

**Transferring to a secondary school is an exciting and significant time for your child's school career; it can also be a time when both pupils and their parents/carers need support, advice and information.**

As a family, you will want to know as much as possible about secondary schools in Tower Hamlets, to help you make the right choice. This guide will take you through the process of applying for a place for your child. It provides information about all state-maintained secondary schools in the borough, including contact details and maps showing where each school is located.

Throughout the guide, we have tried to answer many of the most frequently asked questions, as well as offering advice on how to help your child settle into their new school and to continue to learn well.

But this is just the start. It is very important that both you and your child visit your preferred schools to see them first-hand for yourselves. This guide lists organised visiting times for all schools when you will be able to meet staff and students and see the facilities on offer. I hope you will accept the invitation from the schools to visit and use the opportunity to discuss your child's future learning.

Over 96 per cent of secondary pupils attend a school judged good or outstanding by Ofsted, which puts Borough's secondary school performance in the top 15 per cent nationally.

In 2019\* GCSE results in Tower Hamlets were above the England average in Attainment 8, in Progress 8, in Grade 9-5 in English and Maths combined and the EBacc (English Baccalaureate). All Tower Hamlets schools are committed to providing a broad and balanced curriculum so your child will benefit from a rich educational offer which makes use of the many and diverse opportunities provided through businesses, arts and other organisations.

We are proud that Tower Hamlets schools are inclusive and that children with Special Educational Needs and Disabilities are educated well and thriving in our mainstream settings.

In addition, we have completed a long-term capital investment programme which has transformed the learning environment of secondary and special schools across the borough and built bright, up-to-date classrooms for pupils to learn and thrive.

For more information about any of the schools in this booklet, call our admissions officers on 020 7364 5006/4307/4760 or email [school.admissions@towerhamlets.gov.uk](mailto:school.admissions@towerhamlets.gov.uk)

We look forward to your child joining one of our secondary schools and experiencing quality teaching in a friendly and supportive environment.

Yours sincerely

**James Thomas**

Corporate Director, Children and Culture  
London Borough of Tower Hamlets

\*There were no national results published in 2020 and 2021 due the pandemic.

## 1

## Visiting dates

School	Open mornings	Open evenings
<b>Bishop Challoner Catholic Boys' School</b> <a href="http://www.bishopchallonerfederation.towerhamlets.sch.uk">www.bishopchallonerfederation.towerhamlets.sch.uk</a>	Saturday 17 September, 10am-12pm. Tuesday 20 & Tuesday 27 September, arrive promptly for a 9.30am start.	Tuesday 13 September, 6-8pm
<b>Bishop Challoner Catholic Girls' School</b> <a href="http://www.bishopchallonerfederation.towerhamlets.sch.uk">www.bishopchallonerfederation.towerhamlets.sch.uk</a>	Saturday 17 September, 10am-12pm. Tuesday 20 & Tuesday 27 September, arrive promptly for a 9.30am start.	Tuesday 13 September, 6-8pm
<b>Bow School</b> <a href="http://www.bow-school.org.uk">www.bow-school.org.uk</a>	Monday 12, Wednesday 14, Monday 26, Thursday 29 September & Tuesday 4, Thursday 6 October, at the following times: Tour 1: 9-9.45am, Tour 2: 11.15am-12pm, Tour 3: 4-4.45pm  Tours 1 & 2 must be booked in advance. Details of the booking arrangements can be found on the school website. Tour 3 is an after school tour which does not need to be booked in advance.	Tuesday 20 September, 4.30pm
<b>Canary Wharf College Crossharbour</b> <a href="http://www.canarywharfcollege.co.uk">www.canarywharfcollege.co.uk</a>	Wednesday 5 October, 9am	Tuesday 4 October, 5pm
<b>Central Foundation Girls' School</b> <a href="http://www.central.towerhamlets.sch.uk">www.central.towerhamlets.sch.uk</a>	Thursday 29, Friday 30 September & Monday 3, Wednesday 5, Thursday 6, Friday 7 October, 9.30-10.30am	Tuesday 4 October, 4.30-6.30pm
<b>George Green's School</b> <a href="http://www.georgegreens.com">www.georgegreens.com</a>	Monday 26 to Friday 30 September, 9.15-10.15am Places are limited and must be booked in advance by emailing <a href="mailto:tmorgan@georgegreens.com">tmorgan@georgegreens.com</a> .	Wednesday 28 September, 4-6.30pm
<b>Langdon Park School</b> <a href="http://www.langdonparkschool.co.uk">www.langdonparkschool.co.uk</a>	Tuesday 13 to Friday 16 September, 9.15-10.15am	Thursday 29 September, 5.30-7.30pm
<b>London Enterprise Academy</b> <a href="http://www.londonenterpriseacademy.org">www.londonenterpriseacademy.org</a>	Monday 3 to Friday 14 October, 9-11am	Thursday 29 September & Tuesday 4 October, 4-6.30pm
<b>Morpeth School</b> <a href="http://www.morpethschool.org.uk">www.morpethschool.org.uk</a>	Tuesday 13, Thursday 15, Monday 19, Wednesday 28 September & Monday 10, Friday 14 October, 9.30-11.15am  <b>Informal drop-in sessions:</b> Wednesday 21, Friday 29 September & Wednesday 12, Tuesday 18 October, 9.30-10.30am. Book online to attend a drop-in session: <a href="http://www.morpethschool.org.uk/2166/admissions-2023">www.morpethschool.org.uk/2166/admissions-2023</a> . (There is no need to book in advance to attend an Open Morning.)	Wednesday 5 October, 4-7pm

# Visiting dates

1

School	Open mornings	Open evenings
<b>Mulberry Academy London Dock</b> <a href="http://www.mulberrylondondock.org">www.mulberrylondondock.org</a>	TBC – please check the school website	Tuesday 4 October, 4pm & 5pm (two slots, please register on website)
<b>Mulberry Academy Shoreditch</b> <a href="http://www.mulberryacademyshoreditch.org">www.mulberryacademyshoreditch.org</a>	Monday 19 to Thursday 22, Monday 26 to Thursday 29 September & Monday 3 to Thursday 6 October, 9.15-10.30am	Thursday 6 October, 4-6pm
<b>Mulberry School for Girls</b> <a href="http://www.mulberryschoolforgirls.org">www.mulberryschoolforgirls.org</a>	Monday 19 to Wednesday 21 September, 9.30-10.30am	Tuesday 27 September, 4-6pm
<b>Mulberry Stepney Green</b> <a href="http://www.mulberrystepneygreen.org">www.mulberrystepneygreen.org</a>	Friday 9, Thursday 15, Tuesday 20, Thursday 29 September & Friday 7, Tuesday 11, Thursday 20 October, 9-11am	Wednesday 21 September, 4-6pm
<b>Mulberry University Technical College (UTC)</b> <a href="http://www.mulberryutc.org">www.mulberryutc.org</a>		Thursday 20 October, Thursday 19 January & Thursday 16 March, 4.30-6.30pm
<b>Oaklands School</b> <a href="http://www.oaklands.towerhamlets.sch.uk">www.oaklands.towerhamlets.sch.uk</a>	Thursday 22, Tuesday 27 September & Monday 3, Friday 14, Wednesday 19 October, 9.20-10.30am	Wednesday 28 September, 4-6.30pm
<b>Stepney All Saints CofE Secondary School</b> <a href="http://www.stepneyallsaints.school">www.stepneyallsaints.school</a>	Thursday 15, Wednesday 21 September & Tuesday 4 October, 9.30-11am  Register online to attend at <a href="http://www.stepneyallsaints.school">www.stepneyallsaints.school</a>	Monday 26 September, 4.30-6.30pm
<b>St Paul's Way Trust School</b> <a href="http://www.spwt.net">www.spwt.net</a>	Monday 19 to Wednesday 21 September, 9.15-11am	Thursday 22 September, 4-6.30pm
<b>Swanlea School</b> <a href="http://www.swanlea.co.uk">www.swanlea.co.uk</a>	Wednesday 21, Friday 23, Monday 26, Thursday 29 September, 9.15-10.15am. <b>Family Fun Day:</b> Saturday 17 September, 11am-3pm	Wednesday 5 October, 4-6.30pm
<b>Wapping High School</b> <a href="http://www.wappinghigh.org">www.wappinghigh.org</a>	Wednesday 21, Wednesday 28 September & Wednesday 5 October, 9-10am	Wednesday 21 September, 4.30-6.30pm

# Important dates at a glance

---

## ► September to October 2022

Parents and pupils visit schools (see page 4 for details, school websites and [www.towerhamlets.gov.uk/secondaryadmissions](http://www.towerhamlets.gov.uk/secondaryadmissions))

---

## ► First week of September

Parents can view the online secondary booklet at: [www.towerhamlets.gov.uk/secondaryadmissions](http://www.towerhamlets.gov.uk/secondaryadmissions)

---

## ► Thursday 1 September to Monday 31 October 2022

Parents apply online naming maintained (non fee paying) schools

---

## ► Thursday 15 September 2022

Join the Admissions Service and the Transitions Support Team from the Family Information Advice and Support Service (formerly Parents Advice Centre) for a presentation on secondary transfer.

Visit the following link and reserve your place today: <https://st2023.eventbrite.co.uk>

---

## ► Friday 21 October 2022 (Friday before half term)

Date by which parents should submit their online application for processing and checking

---

## ► Monday 31 October 2022

Statutory deadline for receipt of applications

---

## ► Wednesday 1 March 2023

Parents can log in to Eadmissions and view the outcome of their application – letters are sent by The Admissions Service notifying parents of decisions

---

## ► Friday 31 March 2023

Closing date for appeals for Tower Hamlets schools that use the local authority's admissions policy

---

## ► March 2023

Parents of pupils without an offer at a preferred school can apply to schools that still have places remaining

---

## ► April, May and June 2023

Appeals heard for Tower Hamlets secondary schools

---

## ► September 2023

Your child starts secondary school

If you live in Tower Hamlets you need to apply using the online application form. You can apply between 1 September and 31 October 2022 at [www.towerhamlets.gov.uk/schooladmissions](http://www.towerhamlets.gov.uk/schooladmissions) or [www.eadmissions.org.uk](http://www.eadmissions.org.uk)

It is a simple and easy way to submit your child's secondary transfer application. You will then be able to:

- Search for schools in Tower Hamlets and across London
- Access information about schools and links to school websites
- Make changes to your application up until the closing date 31 October 2022
- Receive notification of the outcome of your application by email.

We strongly recommend that you submit your application online by **Friday 21 October 2022** (the week before half term) in case you forget your password or username or lose internet access for any reason.



## How do I get started?

You will need an email address. You can register for a free email account with a number of providers.

## I have an email address, what next?

Visit [www.eadmissions.org.uk](http://www.eadmissions.org.uk) to register or you can use the link from the Tower Hamlets website at [www.towerhamlets.gov.uk/schooladmissions](http://www.towerhamlets.gov.uk/schooladmissions)

## Who can help me with my online application?

- Guidance on how to apply online is in this booklet – see page 64.
- The Admissions Service can offer advice and answer any questions on 020 7364 5006/4307/4760 or at [school.admissions.gov.uk](http://school.admissions.gov.uk)
- Tower Hamlets Transitions Support Team provides information and advice about the secondary transfer process to help families manage change and make informed decisions  
Email: [transitions@towerhamlets.gov.uk](mailto:transitions@towerhamlets.gov.uk)  
Telephone: 020 7364 1533.

## Free access to computers at our Idea Stores

Please check [www.ideastore.co.uk](http://www.ideastore.co.uk) to keep up to date on which services are available, or other Idea Stores that may be open.

Make a note of the following details as you will need this information to access your application and offer in March.

Application reference number:

Username:

Password:

# Secondary transfer parents' session

Join the Admissions Service and the Transitions Support Team from the Family Information Advice and Support Service (formerly Parents Advice Centre) for a presentation on secondary transfer – sessions begin Thursday 15 September at 6pm. Visit the following link and reserve your place today: <https://st2023.eventbrite.co.uk>

Get information on secondary transfer and ask questions to the Admissions Service and the Transitions Support Team of the Family Information Advice and Support Service (formerly Parents Advice Centre).

## Tower Hamlets aims to offer every child a place in a local mainstream school.

The arrangements for the admission of children with education, health and care plans (EHCP) are different from those for children without plans. The parents or carers of children with EHCPs have the right in law to request that a particular school, (mainstream or special) is named in their child's plan.

However, the placement must be:

- suitable for the child's age, ability, aptitude and special educational needs; and
- compatible with the efficient education of the other children with whom the child would be educated or the efficient use of the local authority's resources.

Transfer to secondary school is a key item for discussion at the Year 5 annual review, so that parents/carers have enough time to consider the type of provision they would prefer and to visit suitable schools.

Parents and carers are advised, when visiting secondary schools, to carefully consider whether their preferred schools are appropriate for their child's needs, particularly if requesting a place in a school in another local authority.

The Family Information, Advice and Support Service (formerly Parents Advice Centre) invites parents and carers to a meeting in the summer term of Year 5 to learn about the arrangements for transfer, to discuss general issues and concerns, and ask questions about secondary transfer. This meeting is attended by a representative from the Special Educational Needs (SEN) Service who will give advice and information and answer parents' questions. Parents and carers who cannot attend are still welcome to contact the Family Information, Advice and Support Service (formerly Parents Advice Centre) or SEN Service for advice and information.

In September, at the start of Year 6, Tower Hamlets parents and carers receive from their child's primary school:

- a covering letter explaining the transfer process
- a form on which parents/carers can express their preference for up to three schools.

Help with completing the form is available from the primary school, the SEN Service on **020 7364 4880** or the Family Information, Advice and Support Service on **020 7364 6489**.

The form should be returned to the SEN Service at the Town Hall (Mulberry Place) no later than 14 October 2022. It may not be possible to consider forms received after that date.

**Please note you must not make an online application if your child has an EHCP.**

In order to make the secondary transfer process as fair as possible, all requests for secondary schools for children with an EHCP will be considered at the Special Educational Needs Secondary Transfer Panel, which is held in November each year.

The panel will make every effort to comply with parents' and carers' wishes in naming their preferred school, although it cannot be guaranteed that it will be approved. Consideration will be given to selecting the second or third preference school if the first preference cannot be approved. If only one school is requested and is not agreed, a place will be allocated at the nearest suitable school by the panel.

There are a number of travel assistance options available to children with an EHCP that support a safe and supportive journey to and from school. Children referred for travel assistance will be assessed to evaluate and decide which type of travel assistance support, if any is most appropriate.

It is not an automatic right that all children with an EHCP will receive travel assistance; this includes but is not exclusive to children attending secondary school, and children who attend schools outside of the borough.

Parents and carers whose children have an EHCP may appeal to the First-Tier Tribunal (Special Educational Needs and Disability) if the local authority does not comply with their request.

For advice on secondary transfer for pupils with EHC plans, contact the SEN Service on **020 7364 2722**.



# Summary of secondary transfer applications 2022

# 2

School	Places available	No of applications by the closing date	Pupils admitted on SEN grounds	Number of children accepted under each criterion on 1 March						Total
				Criterion 1	Criterion 2	Criterion 3	Criterion 4	Criterion 5	Criterion 6	
Bow School	240	382	No applicant was refused a place							240
Central Foundation Girls' School	240	573	3	0	0	60	69	0	108	240
George Green's School	210	360	10	0	3	52	67	0	78	210
Langdon Park School	180	424	6	0	1	38	67	0	68	180
London Enterprise Academy	120	214	No applicant was refused a place							111
Morpeth School	240	736	19	1	6	60	93	2	59	240
Mulberry Academy Shoreditch	180	384	No applicant was refused a place							179
Mulberry School for Girls	240	635	2	1	2	60	66	1	108	240
Mulberry Stepney Green Maths, Computing and Science College	190	658	1	0	1	22	49	0	117	190
Oaklands School	180	381	No applicant was refused a place							180
St Paul's Way Trust School	240	1258	22	2	6	60	81	0	69*	240
Swanlea School	210	962	11	1	1	52	81	0	64	210

\*11 places were offered under Music criterion and 19 places were offered under Feeder criterion

School	Places available	No of applications by the closing date	Number of children accepted under each criterion on 1 March						Total offered
			Criterion 1	Criterion 2	Criterion 3	Criterion 4	Criterion 5	Criterion 6	
Bishop Challoner Boys' School	120	169	No applicant was refused a place						114
Bishop Challoner Girls' School	150	187	No applicant was refused a place						129

\*Bishop Challoner Girls' and Boys' Schools will be consulting on a proposal to become a single school from September 2023. More information is available on the schools' websites

School	Places available	No of applications by the closing date	Number of children accepted under each criterion on 1 March						Total offered
			Criterion 1	Criterion 2	Criterion 3	Criterion 4	Criterion 5	Criterion 6	
Canary Wharf College Crossharbour	81	465	This information is available direct from the school						81

School		Places available	No of applications by the closing date	Number of children accepted under each criterion on 1 March					Total offered
				Criterion 1	Criterion 2	Criterion 3	Criterion 4	Criterion 5	
Stepney All Saints CofE Secondary School**	Foundation Places	40	48	This information is available direct from the school					18
	Language Places	16	26	This information is available direct from the school					16
	Open Places	152	1001	This information is available direct from the school					174

\*\*formerly known as Sir John Cass Foundation & Redcoat CofE Secondary School

School		Places available	No of applications by the closing date	Number of children accepted under each criterion on 1 March					Total offered
				Criterion 1	Criterion 2	Criterion 3	Criterion 4	Criterion 5	
Wapping High School		84	148	This information is available direct from the school					77

# A step-by-step guide to secondary transfer

## Visiting schools

The first thing you should do before deciding on which schools to apply for is to visit as many as is possible, paying attention to any social distancing measures in place at the time and venue. It is important to find out as much as you can about schools and what they have to offer. The information given in this booklet is only a guide and it will be difficult to reach a decision until you have visited the schools and met the students and staff. The visiting times for the schools can be found on page 5. You can also watch the video guides which accompany this booklet at [www.towerhamlets.gov.uk/secondaryadmissions](http://www.towerhamlets.gov.uk/secondaryadmissions).

## The application procedure (Tower Hamlets residents only)

At the beginning of September, Tower Hamlets parents will be able to view the online secondary transfer booklet at: [www.towerhamlets.gov.uk/secondaryadmissions](http://www.towerhamlets.gov.uk/secondaryadmissions)

Your primary school will give you your child's Band information - you will need this when making your application online (see page 15).

Tower Hamlets parents whose children attend primary schools outside the borough will also be able to view the secondary booklet online. Parents should ask their child's primary school for a teacher assessment of their Band (see page 15). If your child has a statement of special educational needs or an educational, health and care plan, please read the information on page 8.

If your child is home educated or at an independent primary school, you can view the online secondary booklet at [www.towerhamlets.gov.uk/secondaryadmissions](http://www.towerhamlets.gov.uk/secondaryadmissions)

## Tower Hamlets residents applying to schools outside of the borough

If you wish to apply to schools outside Tower Hamlets you must check with the local authority or schools concerned as to whether you will need to complete any supplementary forms. Individual schools can provide you with admission policies,

which you should read. It is also advisable to contact the local authority for a copy of their admissions brochure. It is your responsibility to provide all the information that a school needs.

## Non-Tower Hamlets residents

If you do not live in Tower Hamlets, you must apply online following the instructions issued by your home borough. The contact details for the school admission teams in neighbouring boroughs are on page 70.

If you are applying to any of the Tower Hamlets schools that use the local authority's admission policy, you must also complete the Tower Hamlets supplementary form, available from the Admissions Service. The supplementary form provides additional information that we require. Failure to complete this form may mean that your application is given a lesser priority under the local authority's admission policy. This could therefore result in your child not being offered a place.

## Additional forms for, Stepney All Saints CofE Secondary School, Bishop Challoner and Canary Wharf College Crossharbour

All parents wishing to apply to, Stepney All Saints CofE Secondary School, Bishop Challoner Federation of Schools or Canary Wharf College Crossharbour will also need to complete a supplementary form, which you must obtain and return directly to these schools. If parents do not complete a supplementary form it may affect the outcome of the application.

## Completing your application

You should apply online by visiting [www.towerhamlets.gov.uk/schooladmissions](http://www.towerhamlets.gov.uk/schooladmissions) or [www.eadmissions.org.uk](http://www.eadmissions.org.uk)  
Please then follow the steps set out in the online application guide on page 64.

You should name up to six schools in order of preference on your application form. This will maximise the possibility of your child being offered a school you would like them to go to.

If you need help and advice when completing your application, you can call the Admissions Service for assistance on 020 7364 5006/4307/4760 or email [school.admissions@towerhamlets.gov.uk](mailto:school.admissions@towerhamlets.gov.uk)

The online system is available 24 hours a day, seven days a week, up until midnight on the **closing date of Monday 31 October 2022**. However, we encourage applicants to submit their application by **no later than Friday 21 October 2022** (the Friday before half term) as this will allow sufficient time for checking.

## Medical and social reasons

If there are special medical or social reasons that you wish to give in support of your application, **you must state this in your online application explaining why your preferred school is the most suitable and the difficulties that would result if your child had to attend another school. These reasons can include factors affecting your child, yourself and other family members. They must be supported in writing by a professional such as a doctor or social worker and submitted with your application.** You can attach your supporting documents with your online application. Just submit the application first, then click on the 'attach document' button to add the further information.

## Changing your preferences

If you want to change the schools that you are applying to in any way (your preferences or choices), you can do so online up until midnight on 31 October 2022.

## Late applications

If you wish to apply or make changes after **31 October 2022 you must call the Admissions Service on 020 7364 5006/4307/4760** or email: [school.admissions@towerhamlets.gov.uk](mailto:school.admissions@towerhamlets.gov.uk). Your application or changes may not be considered until April 2023, after the decisions have been taken for those applications that were received on time. However, if there is an unavoidable reason for your application being late, for example your family has only just arrived in Tower Hamlets, we may make an exception to this rule and, where possible, treat your application as though it was received on time.

# A step-by-step guide to secondary transfer

# 2

Please note that if you are applying to schools in other boroughs they may have different arrangements.

## Notifying parents of the results of their applications

On 1 March 2023, the Admissions Service will send parents a letter notifying them of the highest ranked school that is able to offer a place. If an application for a higher ranked school is unsuccessful, the letter will tell parents how they can appeal against the decision to refuse a place. Lower ranked offers will be cancelled or withdrawn.

Parents may also receive letters from voluntary aided and academy schools explaining why the application was refused or an offer of a place was not made. If you receive an offer of a place at a non-Tower Hamlets school, you will be asked to return a reply slip confirming your acceptance of the place. You must return the slip by the date stated in the letter.

## Waiting lists

If your child has not been offered a place at one of your preferred schools, they will remain on the waiting lists for these schools until the end of the autumn term (December). If you still wish to remain on the waiting list after December, you must complete an in-year transfer form, which is available from the Admissions Service. Please note that transfers take place at the beginning of every term. You can view the timetable in the guidance notes that accompany the in-year transfer form on the local authority's website.

For Bishop Challoner, Canary Wharf College Crossharbour, London Enterprise Academy, Stepney All Saints CofE Secondary School and Wapping High School, please follow the advice in the letter from the school.

Parents without the offer of a school place can also contact the Admissions Service and ask for their child's name to be placed on waiting lists for other Tower Hamlets schools they did not apply to originally.

## NOTICE

Please note that Mulberry Stepney Green Maths, Computing and Science College (previously known as Stepney Green Maths, Computing and Science college) changed from a boys' school to a co-educational (boys and girls) school from September 2019. During the first five years of its transition a special exemption is being applied for, which will have the following impact on admissions at Year 7 as follows:

In the event of the Academy being oversubscribed the 190 spaces will be divided equally between boys and girls. This means that no more than 95 boys and 95 girls will be offered places. This exemption could mean that some children will be refused a place, because there are more applications than the 95 places available for their gender. However, after 1 March (offer day), if places become available they will be filled regardless of gender. This arrangement only applies to applications for Year 7 entry in September. It will continue for each Year 7 entry up to and until September 2023. Thereafter, Mulberry Stepney Green School's admissions will operate without special regard to maintaining an equal balance of gender.

## The Pan London Coordinated Admissions System

**Tower Hamlets local authority, along with the 32 other London boroughs and local authorities that border the capital, is part of the Pan London Coordinated Admissions Scheme, which coordinates admissions to secondary schools across London.**

The aim of the scheme is that as many parents as possible receive an offer at one of their preferred schools – it also ensures everyone is notified of their offer on the same date. For the 2023/24 academic year, this is 1 March 2023. This helps to make sure that no-one receives more than one offer.

## How does the scheme work?

Parents list the schools that they want to apply to on one form, ranking them in order of preference. The school they most want should be listed first, followed by the next one they prefer and so on. This is important because

only one offer is made and it will be from the highest ranked school (by parents' preference) that is able to make an offer. The form must then be returned to the local authority for the borough in which the child lives for processing.

The local authorities that take part in the Pan London Coordinated Admissions Scheme use a computerised system to share the details of applications. They will then coordinate the offers of places to try to make sure that nobody gets offered more than one school place. The decision on whether a school place can be offered is made by the admission authority for the school.

Where there are more applications than there are places available, the school's published oversubscription criteria is used to decide which applicants can be offered places. Any other schools applied to remain confidential before the decisions are made.

Local authorities hold the offer for the highest preference on the parent's form where a place can be offered and release all other lower preferences, so that these can be offered to others. Potential offers are then exchanged between local authorities until they are in a position to make the single best offer to parents using all available places.

Firstly, children with a statement of special educational need or an education, health and care (EHC) plan must be offered a place at their preferred school, unless there are particular reasons why the local authority is unable to do so (see note 1). The place will be provided in the appropriate band.

A quarter of the total places available at the outlined schools are allocated to each of the four bands. If any of these are oversubscribed in any band, the admission criteria below will be used (in descending order of priority) to allocate places.

1. A 'looked after child' or a child who was previously looked after but immediately after being looked after became subject to an adoption, child arrangements, or special guardianship order including those who appear [to the admission authority] to have been in state care outside of England and ceased to be in state care as a result of being adopted (see note 2).
2. Pupils who have a strong medical or social reason to attend the school applied to. **This can include the parents', carers' or other family members' medical conditions and the family's social needs.** Parents must complete the relevant section on the application form and attach medical and/or social reports from a suitable professional (e.g. a doctor or social worker) to support the application (see note 3).
3. Pupils living nearest the school who are the first born of their sex in the case of a single sex school, or the eldest child in the case of a mixed school. The number of children admitted under this category will reflect 25 per cent of the intake of the school in each band.
4. Pupils who have a brother or sister at the school at the time of admission (see note 4).
5. A child whose parent is a member of staff and has been employed at the school concerned for two or more years at the time of application and/or children of a member of staff who has been recruited to fill a vacancy for which there is a demonstrable skill shortage (see note 5).
6. Pupils who live nearest to the school by the shortest walking route (see note 6).

In categories 3, 4 and 6 above, a higher priority will be given to pupils who live in the priority zones of south Wapping or west Bethnal Green applying to one of the designated schools (see the priority zone section for more information).

## NOTES

**Note 1:** Parents of children with statements of special educational need or an EHC plan should be aware that we want to make sure that these pupils do not, at secondary transfer time, become concentrated in a few schools. Our experience shows that this can compromise the most effective education of the children and the best use of resources. This means that if any particular school receives a large number of applications for pupils with statements, some of these may be refused. All applications will be considered by the Special Educational Needs Panel.

**Note 2:** A looked after child is a child who is (a) in the care of a local authority, or (b) being provided with accommodation by a local authority in the exercise of their social services functions (see the definition in Section 22(1) of the Children Act 1989). Confirmation of a child's looked-after status will be required.

**Note 3:** Applications under this category are considered by the Primary to Secondary Transfer Committee. The committee is made up of a headteacher, a member of the attendance and welfare service and a medical professional. They will decide whether the application should be given priority under this category.

**Note 4:** Sibling refers to brother or sister, half brother or sister, adopted brother or sister, step brother or sister, or the child of the parent/carer's partner, and in every case, the child should be living in the same family unit at the same address. The address used should be the one that the child usually lives at and attends school from.

**Note 5:** Priority will be limited to three places in each year. The staff applicant must complete the relevant section on the application online and attach documentation supporting admission on these grounds. It is the staff applicant's sole responsibility to provide this information. Without the provision of the relevant documents, the child will not be considered on these grounds.

**Note 6:** Home to school distances will be measured by the shortest walking route from the home address to the nearest available pupil entrance in constant use to the school, using a computerised digitised map. Please note that you cannot compare distances to those calculated using any personal or online geographical information system software you may have access to. In the situation that two or more applications measure the same distance to the school, random allocation will be used.

## Priority zone

The south Wapping priority zone is in the area south of Cable Street and Royal Mint Street, west of Butcher Row, north of the Thames and east of Mansell Street and Tower Bridge Approach. Children living in this area will have priority for admission to the designated schools, which are Mulberry School for Girls and Mulberry Stepney Green Maths, Computing and Science College.

The west Bethnal Green priority zone is the area south of Quaker Street, west of Brick Lane, north of Whitechapel High Street and east of Middlesex Street. Children living in this area will have priority for admission to the designated school, which is Swanlea.

## Exceptional medical or social reasons

Where there is a very strong medical or social reason affecting the child or someone else in the family for attending a particular school, priority may be given for admission. Parents must complete the relevant section on the online application and attach medical and/or social reports signed by a doctor or social worker to their application. These reports must be received by **31 October 2022 – a reminder will not be issued.** The application will be considered by the Primary to Secondary Transfer Committee.

## Confirmation of address

Applications should be submitted according to where the child normally resides. This will normally be with an adult or adults who have legal responsibility for the child.

Where the child lives at the property for part of the week with different adults who have legal responsibility, the address where the child spends the majority of the week will normally be used. If time is spent between two homes equally, the parents/carers must agree the address to be used and a single application should then be made. This will commonly be where child benefit is payable, however all evidence will be taken into account.

(This includes Central Foundation Girls' School, George Green's School, Mulberry Academy London Dock, Mulberry Academy Shoreditch, Mulberry School for Girls and Mulberry Stepney Green Maths, Computing and Science College.)

Parents will be required to provide acceptable independent proof of their child's address. They must make sure that the application form they complete is accurate and must contact the Admissions Service and tell their child's headteacher if there is a relevant change after it has been submitted. Places may be withdrawn if false information is entered on the application form. Parents who do not provide evidence of their child's address as requested, or provide conflicting or inconclusive information, may have the place withdrawn even if it has already been accepted.

Applicants living overseas may only submit an application if they have an address within the local authority area, and documentary evidence can be supplied to show they will return to the address prior to the September in the year of entry. This address must not be that of a friend, relative or other address of convenience.

For families of UK service personnel with a confirmed posting in Tower Hamlets, or crown servants returning from overseas to live within the borough, an address in Tower Hamlets will be used for admission purposes in advance of arrival in the UK. This is provided that the application is accompanied by an official letter (i.e. from the Ministry of Defence or Foreign and Commonwealth Office), which declares a relocation date and a unit postal address or quartering area address.

### Siblings in the same year group transferring

Where two or more siblings are in the same year group (e.g. twins) and it's the parent's wish that they should attend the same school, if one sibling can be offered a place, the other will automatically be offered a place to ensure they're not separated.

### Changing preferences

Parents and carers may not change their preferences unless there is a genuine reason for doing so, for example a change of address. Requests to change preferences must be made in writing, giving the full reasons.

### The admission policies for the Bishop Challoner Federation of Schools, Canary Wharf College Crossharbour, London Enterprise Academy, Stepney All Saints CofE Secondary School, St Paul's Way Trust, Wapping High School

The admission policies for these schools are available on their websites or at [www.towerhamlets.gov.uk/schooladmissions](http://www.towerhamlets.gov.uk/schooladmissions). If you are not sure about your child's claim to a place at one of these schools, on religious or other grounds, read the admission criteria and check with the school before applying. Please remember that, where necessary, it is your responsibility to complete a supplementary form for these schools and to return it to them with all of the information requested by the closing date. If you don't, your application will not be fully considered and this could affect the decision.

### Applying for school places at sixth form (years 12 and 13)

Most schools in Tower Hamlets have a sixth form. The individual school pages in this booklet will include information about the sixth form and the section with the school's contact details has a website address where its sixth form admissions policy can be viewed.

Individual schools take decisions on sixth form admission. Their policies will therefore include: a timetable with a closing date for the receipt of applications; separate admission numbers for internal and external applicants; and course entry criteria that apply to both internal and external applicants.

Similar to the admissions arrangements for entry to year 7, looked-after children and previously looked-after children are given the highest priority for sixth form admission, provided they meet the school's course entry criteria.

When deciding on admission to the sixth form, a school will not take account of a pupil's previous behaviour, attitude or attendance record. Any meetings held to discuss suitable options and courses will not form part of the school's decision making process.

If you wish to appeal against a decision to refuse your child admission to a Tower Hamlets school's sixth form, you can submit your appeal online at [www.towerhamlets.gov.uk/secondaryadmissions](http://www.towerhamlets.gov.uk/secondaryadmissions)

### Admission of children outside their normal age group

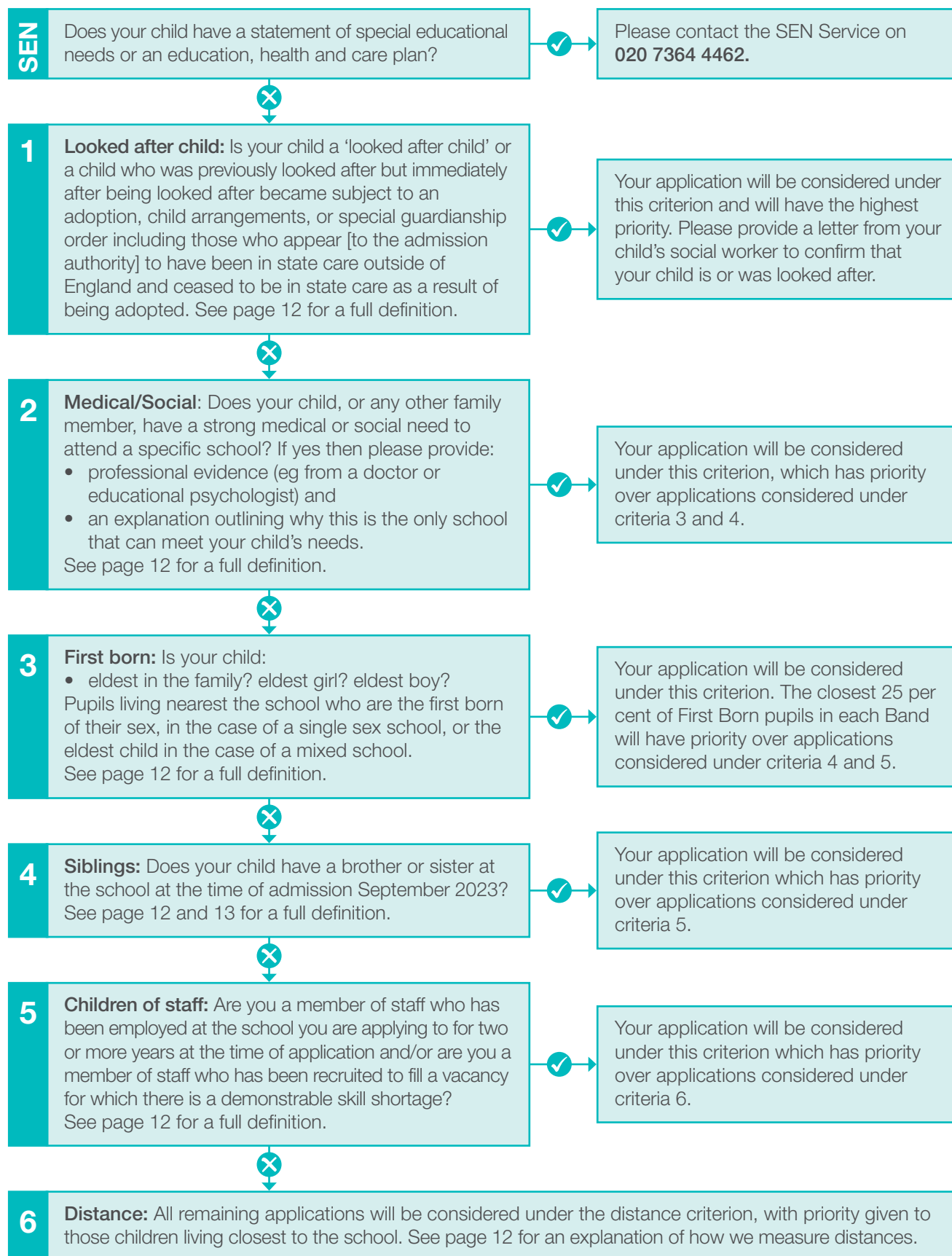
Children in Tower Hamlets transfer from primary to secondary school when they are 11 years old. The local authority would therefore expect a child to start secondary school in year 7, which is the normal age group for an 11-year-old starting secondary school. However, it is also acknowledged that there may be an exceptional reason for a child to start secondary school outside of the normal age group. This could be for a child to transfer early, at the end of year 5, or for a child to remain an additional year at primary school when they reach the end of year 6.

If you are a parent of a child who you think needs to start secondary school outside of their normal year group, please write to the Admissions Service by 31 October 2022. Your letter should clearly explain the exceptional reasons for your request and you must also include up-to-date advice from an appropriate education professional.

Your request will be considered by the local authority's service head for learning and achievement. The service head will also seek the views of your child's primary school and its education psychologist, before deciding whether or not your child's needs can be met within the current year group. You will be notified of the decision in writing.

You must also submit a secondary school application by the 31 October 2022 closing date. Where it is agreed that your child can transfer early, your secondary school application will then be considered separately, according to the school(s) admission criteria. There is no guarantee that your child will be offered a place at your preferred school(s).

# Criteria flowchart



# Questions and answers on moving to secondary school

# 2

## What is banding?

Banding is used at secondary transfer to help to ensure that secondary schools maintain a balanced admission intake that reflects the full range of abilities of all children in the local authority. Pupil assessment from each Primary school in the summer term of year 5 is used to place every pupil in one of four quartiles. For administrative purposes, the quartiles are referred to as Band A, B, C or D.

In the case of oversubscription, secondary schools will take equal amount of pupils from each quartile, ensuring that children from all abilities have equality of access. For pupils who apply from primary schools outside of Tower Hamlets, teacher assessment will be used to determine which quartile they will be placed in.

All of the borough's community schools use banding. This includes Central Foundation Girls', George Green's, London Enterprise Academy, Mulberry Academy London Dock, Mulberry Academy Shoreditch, Mulberry School for Girls, Mulberry Stepney Green Maths, Computing and Science College, St Pauls Way Trust and Stepney All Saints CofE Secondary School.

## How will I be notified about the outcome of my application?

Notification of the outcome of your online application will be made by email. Emails will be sent from the evening of **1 March 2023**. Parents/carers will also be notified by letter, which will be sent on **1 March 2023**.

## What if I apply late?

If you apply after **31 October 2022** your application may not be considered until **April 2023**. However, if it is agreed that there is a good reason for your application being late, consideration will be given and an exception to this rule may be made.

## How do I appeal?

The notification letter will give you information about appeal procedures. If you live in Tower Hamlets and you are refused a place at a Tower Hamlets school that uses the local authority's

admission policy, you will receive information on how to make your appeal online at [www.towerhamlets.gov.uk/secondaryadmissions](http://www.towerhamlets.gov.uk/secondaryadmissions).

When making your appeal, please state your reasons clearly, otherwise it may not be considered. For schools outside Tower Hamlets, you should immediately contact the relevant local authority for details of the appeal arrangements. You must do this straight away to make sure you do not miss the appeal closing date.

## When will my appeal be heard?

Appeal panels are independent of schools and admission authorities. They sit during the summer term and you should know their decision before your child starts school in September.

## Are places reserved for appeals?

No. Places that become available before appeals have been heard will be filled periodically from the waiting list. If an appeal is successful, the school must offer a place to the child concerned causing the number of children to be admitted to exceed the planned admission figure. No further places will be offered until the number of children to be admitted drops beneath this figure again.



## Further appeals

The decision of the appeal panel is final. A fresh appeal can be made where a new application is unsuccessful. However, new applications in the same academic year will only be allowed where there has been a relevant change of circumstances since the original decision.

## Do all schools keep waiting lists?

Waiting lists are held for the Tower Hamlets schools that use the local authority's admission policy. From March to September, there is a waiting list for each band. All schools must keep a waiting list until the end of the autumn term, (December) at least. If you are refused a place at a voluntary aided school or a school in another borough, you will have to check if they will keep the waiting lists any longer than this.

## How are the waiting lists kept?

The Admissions Service will maintain the waiting lists for Tower Hamlets community schools. This includes Central Foundation Girls', George Green's, Mulberry Academy London Dock, Mulberry Academy Shoreditch, Mulberry School for Girls, Mulberry Stepney Green Maths, Computing and Science College and St Paul's Way Trust.

If your child has not been offered a place at one of your preferred schools, they will remain on the waiting lists for these schools until the end of the autumn term (December). You will then need to reapply to remain on the waiting list after December. See note on page 11.

There will be separate waiting lists for each band - late applicants will be added to these. Until September 2023 the waiting lists for each band will be kept in the following descending order of priority:

1. Children with a brother or sister in the school at the time of admission.
2. Children living nearest the school. If a vacancy arises, it will be offered to the first applicant on the waiting list for that band. If a school cannot fill all the places available in a particular band, places will be filled by applicants from adjoining bands.

From September 2023, the waiting lists are combined into one list, disregarding the bands. The order of priority for the waiting list will then be:

1. Children looked after by the local authority, previously looked after children who left care under a residence or special guardianship order, or those adopted from local authority care.
2. Children without a school place.
3. Children with a brother or sister in the school.
4. Children whose parents are members of staff.
5. Children living nearest the school.

Proximity to the school will determine priority where there are competing claims to a place.

## What happens if I haven't got a place in a school of my choice?

You have a legal duty to ensure that your child receives an education. A place will be reserved for your child at the nearest school to you that still has a vacancy. You should take up the place reserved or contact the Admissions Service to ask about vacancies in other schools.

## Where can I go for more advice?

You can contact the Admissions Service or visit the office in working hours. A Bengali and Sylheti speaking member of staff is available upon request.

### The Admissions Service

Email: [school.admissions@towerhamlets.gov.uk](mailto:school.admissions@towerhamlets.gov.uk)  
Telephone: 020 7364 5006/4307/4760

The Family Information, Advice and Support Service (formerly Parents Advice Centre) offers a range of services to parents and carers and young people including:

- expert information advice and support for parents of children with special educational needs
- explaining the admissions process and supporting parents in completing online applications
- supporting families with managed moves, exclusions and appeals.

**Tower Hamlets Transition Support Service provides information and advice about the secondary transfer process to help families manage change and make informed decisions.**

### Contact:

Email: [transitions@towerhamlets.gov.uk](mailto:transitions@towerhamlets.gov.uk)  
Telephone: 020 7364 1533

## Before you apply:

### DO:

- ✓ **Visit schools** – this is the best way to get a feel for the school. You can meet staff, ask questions and see the school in action. Visiting dates are on page 4 and available on each school's details page.
- ✓ **Think about what is right for your child** – don't rely on what others tell you, visit the school and see for yourself.
- ✓ **Talk to your child** – involve them as much as you can.
- ✓ **Think about the journey** – how easy will it be to get to the school?
- ✓ **Check the admissions criteria** and how likely it is that your child would be offered a place.
- ✓ **Use all your preferences** – make sure you include your most local school.
- ✓ **Ask the Admissions Service Team for advice.**
- ✓ **Make sure you press 'submit' when you finish your online application.** You should receive a reference number confirming safe receipt.

### DON'T:

- ✗ **Put private (independent) fee paying schools on your application** – you should apply directly to the private school.
- ✗ **Wait until the last minute to apply** – you may have problems logging in or getting online. Give yourself plenty of time to think things through.
- ✗ **List only one school** – your application won't be treated more favourably and you could lose out on another school you like.

For information on travel, free school meals, attendance and local authority guidance visit

[www.towerhamlets.gov.uk/schooladmissions](http://www.towerhamlets.gov.uk/schooladmissions)

# Secondary schools and 14-19 provision in Tower Hamlets

## 3

School	Page
Bishop Challoner Catholic Boys' School	18
Bishop Challoner Catholic Girls' School	20
Bow School	22
Canary Wharf College Crossharbour	24
Central Foundation Girls' School	26
George Green's School	28
Langdon Park School	30
London Enterprise Academy	32
Morpeth School	34
Mulberry Academy London Dock	36
Mulberry Academy Shoreditch	38
Mulberry School for Girls	40
Mulberry Stepney Green Maths, Computing and Science College	42
Oaklands School	44
Stepney All Saints CofE Secondary School	46
St Paul's Way Trust School	48
Swanlea School	50
Wapping High School	52
East London Arts and Music College (16-19)	54
London East Alternative Provision (LEAP)	56
Mulberry University Technical College (UTC) (14-19)	58
New City College - Tower Hamlets (14-19)	60
South Quay College (14-16)	62

**Bishop Challoner Boys' School is a Catholic school which enables every child to achieve their utmost potential in their studies and their spiritual and personal development.**

Our ethos is based upon faith and gospel values, emphasising kindness, duty to others and a respect for the uniqueness and dignity of all. Our school welcomes and includes students of all faiths and every boy's aptitudes and gifts are developed within an environment that will encourage and support his spiritual, physical, moral, and intellectual development. We have high expectations of all and expect all to achieve.

Our young men consistently outperform boys nationally both at GCSE and at A level and we also encourage independence, resilience, and personal growth through their personal development at our school. We celebrate our multicultural and diverse identity and one in which every child who enters this school is known and loved. We strive to ensure all our pupils and students enjoy their time at Bishop Challoner and to have a worthwhile educational experience. We seek to make them feel happy, safe, secure and to grow in God's love so that when they leave the school they are equipped to cope and deal with the world and make it a better place.

We firmly believe that our parents are the prime educators and that our success is a result of collaboration between parents, school and child working together for the good of the child. Our parents are encouraged to be fully engaged in their children's education and there are many opportunities for parents to visit the school and to contribute to their child's formation and success.

We are well connected to various prestigious universities and large companies with many of our students going on to Oxbridge or Russell Group universities. We have also supported students in securing funded scholarships to Ivy League universities in the United States.

We aim to ensure that when boys leave our school they do so as confident and responsible "young men for others", ready to become leaders in their chosen fields and make a positive contribution to the world around them.



## School organisation

Bishop Challoner Boys' School is a high performing four-form entry, Catholic school. Part of a federation, we are attached to a mixed sixth form, with a partner girls' school sharing our site. The transition process for each new Year 7 group is carefully planned and detailed contact with primary schools enables us to tailor that support for individuals.

During Key Stage 3, students are taught in tutor groups in some subjects, and grouped by ability in others. Each student will study the following subjects: English, Maths, Science, Religious Education, Modern Foreign Languages, History, Geography, Music, Art, Drama, Technology, ICT, and PE. This broad curriculum is refined in Key Stage 4 as students choose and prepare for Post-16 courses.

The following GCSEs are among those available in the option blocks: History, Geography, Modern Foreign Languages, Computing, Music, Art, Drama, PE, Resistant Materials, Textiles, Food and Nutrition, Media, Sociology and Economics.

The majority of students will choose either History or Geography and take a modern foreign language as well as choosing two other subjects. Most students will take 9 GCSEs at the end of Year 11.

In addition to GCSEs, we offer a selection of vocational courses. These are available in ICT, Business, Sport, Health and Social Care and Media. A similar range of A Levels and vocational courses are also available in our successful sixth form.

## Learning support

There are several systems in place to ensure that our boys are supported to achieve. They are based on the following principles:

- We ensure academic mentoring and support is available for every student, should they begin to underachieve against their potential at any point in their education here.
- We ensure that all support offered is evidence based, regularly reviewed and carefully explained to parents.
- We have high expectations and ensure we support students to meet these.
- Teachers fully understand the different categories of special educational needs and disabilities (SEND) and therefore plan lessons in a strategic and holistic way.
- Our routines and structures are SEND friendly to ensure solid foundations from which teachers can further build in support where needed.

**"Leaders ensure that pupils' safety and welfare are at the top of their agenda."** – Ofsted 2021

# Bishop Challoner Catholic Boys' School\*

# 3

We believe that a child's learning needs should, where possible, be met through the high-quality teaching and support offered by their subject teacher. Additional classroom and individual support is provided for all those that need it, on top of this, through our SEND team and where appropriate our Learning Support Centre. This will be based upon any identified needs and existing supports we learn of in the transition process from their primary school or upon any needs we identify later, after a child has started with us.

## Accommodation

Bishop Challoner is in a £30 million landmark building on Commercial Road, housing state-of-the-art facilities designed to provide the best education possible. We have extensive sports facilities including an onsite gym, a theatre, dance studio and several music practice rooms as well as a large number of fully equipped laboratories and tech rooms, catering/kitchens etc. We have a separate sixth form building with its own canteen and study areas.

Bishop Challoner is a wheelchair accessible school. It has three accessible lifts to all floors and ten accessible

toilets, one with changing facilities. We recommend that parents of boys who might use these facilities visit the school on one of our open days

## Pastoral care

While pastoral care is the responsibility of every member of staff, the Head of Year and the Form Tutor provide more individual support and are the strongest links between home and school. Our small school environment allows us to ensure that every boy is known and cared for. Two full time Student Support Officers and a number of mentoring and support programmes run by adults or older sixth form students are included in our package of care and support for each child. We look to develop the whole person – mind, body and spirit.

**"Pupils learn about respect and tolerance for others, as well as different religious traditions. Through the school's Catholic principles, pupils learn the difference between right and wrong."** – Ofsted 2021

We have regular acts of worship, both within the school and in the Church of St Mary and St Michael next door, and we emphasise the need for spiritual growth

and enquiry as our young men prepare for their adult lives. We teach of the need to respect the self, each other and God.

## Extracurricular activities/sport

We have a huge range of extracurricular activities on offer to all students. Clubs include art, film, languages, Latin, dance, choirs, rock and jazz bands, orchestra, drama, science (STEM), coding, maths, debating, creative writing, music composition, cooking, coding, sports clubs and teams, and world religions. All students have the opportunity to go on school, cultural and enrichment trips throughout the academic year.

Sport is an area in which we excel and our boys perform at the highest level of sporting achievement. This includes taking part in borough and regional teams in both football and athletics and having several students on the national athletics teams for their age groups and in premiership club programmes. We have produced professional snooker players, national athletics champions and numerous Premiership footballers.

Do come and see for yourself all that Bishop Challoner has to offer.

## School information

### Bishop Challoner Catholic Boys' School

352 Commercial Road, E1 0LB

Tel: 020 7791 9500

Fax: 020 7791 9594

Email: [info@bishop.towerhamlets.sch.uk](mailto:info@bishop.towerhamlets.sch.uk)

Twitter: @ChallonerBOYS @ChallonerCFS

Website: [www.bishopchallonerfederation.towerhamlets.sch.uk](http://www.bishopchallonerfederation.towerhamlets.sch.uk)

Headteacher: Mr JP Morrison

Age range: 11-18

Phase of education: Secondary

Gender: Boys' School

Type of school: Voluntary aided school

Day/boarding school: Day

Religious character: Roman Catholic

Selection: Non-selective

Total number of pupils: 600

### Admission arrangements

Number of places available for year 7: 120

Oversubscription criteria: See admissions policy on school website

Previous year's applications: See page 9

Previous year's appeals: 0

### Open days

Mornings: Saturday 17 September, 10am-12pm

Tuesday 20 & Tuesday 27 September, 9.30am

Evenings: Tuesday 13 September, 6-8pm

### Uniform and general

Uniform: See school website

Exam results: See school website

Ofsted reports: the full report is available at <http://reports.ofsted.gov.uk> or on the school website

School policies: See school website

\*Bishop Challoner Boys' and Girls' Schools will be consulting on a proposal to become a single school from September 2023. More information is available on the schools' websites.

**Bishop Challoner Girls' School is a Catholic school in which every child is enabled to achieve their full potential academically, personally and spiritually.**



Our ethos is based upon faith, kindness, duty to others and a respect for the uniqueness and dignity of all persons equally, reflecting the gospel values our school is built upon. Our school welcomes and includes members of all faiths.

Located between Wapping and the City of London, our single-sex school is attached to a co-educational sixth form college and is part of a federation with the boys' school.

Bishop Challoner is a high-performing school where students make rapid progress. It is also a vibrant, happy place to learn. We are proud of our reputation for developing our students' academic achievement, creativity and leadership. We celebrate our multicultural and diverse identity and one in which every child who enters this school is known and loved.

We strive to ensure all our students enjoy their time at Bishop Challoner and have a worthwhile educational experience. We seek to make them feel happy, safe, secure and to grow in God's love so that when they leave the school they are equipped to cope and deal with the world and make it a better place.

We firmly believe that our parents are the prime educators and that our success is a result of collaboration between parents,

school and child working together for the good of the child. Our parents are encouraged to be fully engaged in their children's education and there are many opportunities for parents to visit the school and to contribute to their child's formation and success.

**"Pupils are positive about the changes and routines that new leaders introduced. These have improved pupils' behaviour and attitudes. Inspectors saw calm, friendly and sensible behaviours throughout the day."** – Ofsted 2021

Our small class sizes create an environment in which potential can be fully realised because each child is known, cared for and encouraged to be the best that they can be.

**"Pupils are keen to learn and pay attention in class."** – Ofsted 2021

By the time our students leave, they are confident, capable, responsible 'young women for others', ready to play their part and become the leaders in the world.

We have extensive links with universities such as Cambridge, Oxford, Imperial College and Queen Mary University and partnerships with local businesses such as RBS, Wells Fargo and Barclays. As a result, many of our sixth formers go on to Oxbridge or Russell group universities and in some cases have gained full scholarships to Ivy League universities in the United States.

## School organisation

Bishop Challoner Girls' School is a high performing five-form entry Catholic school. The transition process for each new Year 7 group is carefully planned and detailed contact with primary schools enables us to tailor individual support for each student joining us.

During Key Stage 3, students are taught in tutor groups in some subjects, and grouped by ability in others. Each student

will study the following subjects: English, Maths, Science, Religious Education, Modern Foreign Languages, History, Geography, Music, Art, Drama, Dance, Technology, ICT, and PE. This broad curriculum is refined in Key Stage 4 as students choose and prepare for Post-16 courses.

The following GCSEs are among those available in the option blocks: History, Geography, Modern Foreign Languages, Computing, Music, Art, Drama, Dance, PE, Resistant Materials, Textiles, Food and Nutrition, Media, Sociology and Economics.

The majority of students will choose either History or Geography and take a modern foreign language as well as choosing two other subjects. Most students will take 9 GCSEs at the end of Year 11. In addition to GCSEs, we offer a selection of vocational courses. These are available in ICT, Business, Sport, Health and Social Care and Media. A similar range of A Levels and vocational courses are also available in our successful sixth form.

## Learning support

There are several systems in place to ensure that our girls are supported to achieve. They are based on the following principles:

- We ensure academic mentoring and support is available for every student, should they begin to underachieve against their potential at any point in their education here.
- We ensure that all support offered is evidence based, regularly reviewed and carefully explained to parents.
- We have high expectations and ensure we support students to meet these.
- Teachers fully understand the different categories of special educational needs and disabilities (SEND) and therefore plan lessons in a strategic and holistic way.
- Our routines and structures are SEND friendly to ensure solid foundations from which teachers can further build in support where needed.

# Bishop Challoner Catholic Girls' School\*

# 3

We believe that a child's learning needs should, where possible, be met through the high-quality teaching and support offered by their subject teacher. Additional classroom and individual support is provided for all those that need it, on top of this, through our SEND team and where appropriate our Learning Support Centre. This will be based upon any identified needs and existing supports we learn of in the transition process from their primary school or upon any needs we identify later, after a child has started with us.

## Accommodation

Bishop Challoner is in a £30 million landmark building on Commercial Road, housing state-of-the-art facilities designed to provide the best education possible. We have extensive sports facilities including an onsite gym, a theatre, dance studio and several music practice rooms as well as a large number of fully equipped laboratories and tech rooms, catering/kitchens etc. We have a separate sixth form building with its own canteen and study areas.

Bishop Challoner is a wheelchair accessible school. It has three accessible lifts to all floors and ten accessible

toilets, one with changing facilities. We recommend that parents of girls who might use these facilities visit the school on one of our Open Days.

## Pastoral care

While pastoral care is the responsibility of every member of staff, the Head of Year and the Form Tutor provide more individual support and are the strongest links between home and school. Our small school environment allows us to ensure that every girl is known and cared for. Two full time Student Support Officers and a number of mentoring and support programmes run by adults or older sixth form students are included in our package of care and support for each child. We look to develop the whole person – mind, body and spirit.

**"Pupils benefit from a range of opportunities that enrich their personal development. Staff teach them to respect all faiths and value diversity."** – Ofsted 2021

We have regular acts of worship, both within the school and in the Church of St Mary and St Michael next door, and we emphasise the need for spiritual growth and enquiry as our young women prepare

for their adult lives. We teach of the need to respect the self, each other and God.

## Extracurricular activities

We have a huge range of extracurricular activities on offer to all students. Clubs include art, film, languages, Latin, dance, choirs, rock and jazz bands, orchestra, drama, science (STEM), coding, maths, debating, creative writing, music composition, cooking, coding, sports clubs and teams, and world religions. All students have the opportunity to go on school, cultural and enrichment trips throughout the academic year.

Sport is an area in which we excel and our girls perform at the highest level of sporting achievement. This includes taking part in borough and regional teams in both football and athletics and having several young women on the national athletics teams for their age groups and in premiership club programmes. We have produced Olympic athletes, Commonwealth Games weightlifters and Premiership footballers.

Do come and see for yourself all that Bishop Challoner has to offer.

## School information

### Bishop Challoner Catholic Girls' School

352 Commercial Road, E1 0LB

Tel: 020 7791 9500

Email: [info@bishop.towerhamlets.sch.uk](mailto:info@bishop.towerhamlets.sch.uk)

Twitter: @ChallonerGIRLS @ChallonerCFS

Website: [www.bishopchallonerfederation.towerhamlets.sch.uk](http://www.bishopchallonerfederation.towerhamlets.sch.uk)

Headteacher: Mr JP Morrison

Age range: 11-18

Phase of education: Secondary

Gender: Girls' School

Type of school: Voluntary aided

Day/Boarding school: Day

Religious character: Roman Catholic

Selection: Non-selective

Total number of pupils: 750 with another 300 in sixth form

### Admission arrangements

Number of places available for year 7: 150

Oversubscription criteria: See admissions policy on school website

Previous year's applications: See page 9

Previous year's appeals: 0

### Open days

Mornings: Saturday 17 September, 10am-12pm

Tuesday 20 & Tuesday 27 September, 9.30am

Evenings: Tuesday 13 September, 6-8pm

### Uniform and general

Uniform: See school website

Exam results: See school website

Ofsted reports: the full report is available at <http://reports.ofsted.gov.uk> or on the school website

School policies: See school website

\*Bishop Challoner Girls' and Boys' Schools will be consulting on a proposal to become a single school from September 2023. More information is available on the schools' websites.

**Bow is a vibrant and inclusive school and sixth form, where we celebrate and promote students' diverse aspirations and maintain a culture of high expectations and standards; allowing us to deliver excellence and fulfil our vision: that every learner leaves Bow World and Career Ready.**

We pride ourselves on our quality staff who are dedicated to providing every student with the platform for them to excel academically, but we also recognise that learning extends beyond the classroom.

A rigorous focus on academic attainment is blended with an unparalleled enrichment programme so that students are able to live full lives, are prepared for the 21<sup>st</sup> century world and are ready to become the leaders of tomorrow. We nurture and challenge students, encouraging their ambition and uncovering their talents.

Year-on-year our outcomes continue to improve, and in 2018 we were recognised by Ofsted as a Good school. Inspectors were impressed with the school's leadership, students' progress and achievements, the quality of teaching, our blossoming Sixth Form and the provision for both disadvantaged students and those with special educational needs.

### School Organisation

Our relationship with you is crucial to creating an environment in which students will thrive. Parent evenings, coffee mornings, information sessions, and targeted meetings allow us to build a collaborative community. We also want you to see your child's journey, and our website, magazine, and social media channels ensure everyone knows what is happening across the school. The quality of this offer is something that we work very hard to maintain and is an aspect of the school that was acknowledged in July 2020 when the school achieved the externally assessed Leading Parent Partnership Award.

We understand that transition from primary to secondary school can be daunting, but we also know that the quicker students adjust to their new



surroundings, the sooner they will be able to achieve their potential.

Our unique transition programme, developed by our dedicated team, begins the moment every child is offered a place at Bow School, to ensure all pupils feel supported in their transition process and belong to the Bow family long before September.

The curriculum is designed to inspire, challenge and engage students in their learning and has been developed to support students in achieving our vision for them, in becoming World and Career Ready.

The World and Career Ready pledge encapsulates our offer: teaching and lessons built around the future built into the curriculum, an embedded culture of excellence and a rich programme of mentoring and advice, workshops and lectures, trips and visits, experiences and partnerships and so much more, designed specifically to harness students' energy, skills and experience to open doors to life beyond Bow School.

Preparation for life beyond the school gate is completed in our expanding Sixth Form, where students enjoy a first class learning experience. We equip our alumni with the necessary tools to access professional careers like finance, journalism, medicine, law or engineering via top apprenticeships and universities. Our track record of success has seen over a third of students progressing onto Russell Group Universities and in the last two years, two students obtaining places at Cambridge University and two reading Medicine at Oxbridge Universities.

### Learning Support

The SEND department continues to support students in lessons throughout years 7-13, and where necessary students are offered additional one-to-one support. Continuous assessment helps us to identify students who may benefit from this support.

Our learning support area is designed to cater for students who have specific needs. Students are taught in small groups so that they receive targeted, individual

teaching and learning opportunities. This support extends into the classroom. The learning support area lies at the heart of our support for students. Within this one area a wide variety of support systems and staff cater for the diverse needs of our students.

### Pastoral Care

Students' wellbeing is as important as their academic and personal progression. Each Key Stage is overseen by the behaviour, welfare and personal development team. Year learning managers and form tutors provide daily pastoral support and are the first port of call for parents. Additionally, a comprehensive programme of interventions is tailored to the individual needs.

### Environment

Students are taught in a new, modern and stimulating learning environment, including 12 science labs, seven

specialist design and technology rooms, a dedicated learning space, two drama studios, a theatre, a dance studio, music rehearsal and performance spaces, and large art rooms with inspirational views of the Lea Valley and the Queen Elizabeth Olympic Park. We have a great range of sporting facilities including table tennis, netball, basketball, football, trampolines, three rooftop pitches, and a fitness gym.

### Extra-Curricular Activities

We are always seeking to enhance our school experience by including students in all aspects of school life. Participation is encouraged through the student council, numerous workshops, and real-life experiences such as student ambassadors and student receptionists. Students also shape our future through other leadership opportunities, with roles in many subjects as well as an elected Prefect team.

Students have access to an enrichment programme, designed to broaden their

horizons and expand their skillset. BowExtra! is our diverse enrichment programme that complements the quality and strength of our academic offer, and aims to equip students with the skills, qualities, and attributes necessary for them to flourish in their professional and personal lives. Additionally, we are an accredited centre of financial literacy and enterprise education.

We have developed a network of partnerships on a local, national and international scale, enabling students to be active citizens in the wider world they will enter. These partnerships enhance our curriculum and help us to prepare students for higher education and employment through mentoring programmes, educational workshops and inspirational visits and talks.

We are constantly evolving to secure more innovative, impactful and relevant learning experiences for all and realise our vision that every one of our students leaves the school both World and Career ready.

## School information

### Bow School

44 Twelvetreves Crescent, E3 3QW

**Tel:** 020 7536 5525

**Email:** bs@bow-school.org.uk

**Twitter:** @bowschool1

**Website:** www.bow-school.org.uk

**Headteacher:** Danny Lye

**Age range:** 11-19

**Phase of education:** Secondary

**Gender:** Mixed

**Type of school:** Community

**Day/Boarding school:** Day

**Religious character:** None

**Specialism:** None

**Selection:** Non-selective

**Total number of pupils:** 1200

### Admission arrangements

**Number of places available for year 7:** 240

**Oversubscription criteria:** See page 12

**Waiting list arrangements:** See page 15

**Previous year's applications:** See page 9

**Previous year's appeals:** 0

### Open days

**Mornings:** Monday 12, Wednesday 14, Monday 26, Thursday 29 September & Tuesday 4, Thursday 6 October

School tours for all above dates:

Tour 1: 9-9.45am Tour 2: 11.15am-12pm Tour 3: 4-4.45pm

Please note:

Tours 1 & 2 must be booked in advance. Details of the booking arrangements can be found on the school website: [www.bow-school.org.uk](http://www.bow-school.org.uk).

Tour 3 is an after school tour which does not need to be booked in advance but does require all visitors to be aware of any public health restrictions that may be in place at that time.

**Evenings:** Tuesday 20 September, 4.30pm

### Uniform and general

**Uniform:** See school website

**Exam results:** See school website

**Ofsted reports:** Go to [www.reports.ofsted.gov.uk](http://www.reports.ofsted.gov.uk) and type the school name in search

**School policies:** See school website

**Canary Wharf College Crossharbour has a Christian ethos and aims “To live, share and celebrate the love of learning in a Christian environment, whilst welcoming those of other faiths and cultures.”**



Canary Wharf College Crossharbour opened in September 2016. It is part of The Canary Wharf College Multi-academy Trust which consists of three schools: two primaries and a secondary. All three schools are Ofsted rated either Outstanding or Good.

**“Leaders have made sure that the curriculum helps pupils to deepen their knowledge and to develop important skills as they progress through the school.”**

– CWC Crossharbour Ofsted Report March 2019

### School organisation

The College promotes quality subject teaching by specialist staff, with a particular emphasis on maths, science and technology. There is a vibrant sports programme, with nearly three hours a week of activities plus extended day activities on offer.

We have a ten-year track record of success for start-up schools and offer outward-bound activities, overseas visits, volunteering in the community, and Duke of Edinburgh awards.

Admissions comply with the school's admissions code. If oversubscribed, priority will be given to pupil premium

children (up to ten per cent), then children from the Canary Wharf College primary schools. As a designated school of religious character, the remainder of the places will be offered on a 50 per cent faith and 50 per cent community basis.

### Learning support

- High academic expectations and specialist teaching
- Life skills for the working world
- Maths and technology for the future
- Strong work experience programme
- Homework to encourage independent learning
- Strong focus on personal development, including Duke of Edinburgh awards
- Overseas and outward-bound experiences
- Physical education excellence embraced.

One parent said: “My daughter's achievement in PE has been amazing. She is fully aware of the importance of physical activity alongside her academic lessons, to enhance her learning.”

### Accommodation

Students attend the school in our fully equipped, interim site at Selsdon Way, E14.

### Pastoral care

- Christian ethos permeates learning in all key stages
- Vertical house system enabling older and younger students to mix
- Students treat each other in ways which respect British values
- Pastoral care for smooth transition
- Students of all faiths, languages and ethnic heritages welcome
- Community volunteering opportunities.

**“Pupils' knowledge of British values and their spiritual, social, moral and cultural development are well promoted; provision includes topical assemblies and regular and effective personal, social, health and economic (PSHE) education sessions.”** – CWC Crossharbour Ofsted Report March 2019

### Extracurricular activities

- Wide range of activities, including cookery, art, choir, and creative arts
- Examples of sport are football, rowing, cricket, table- tennis, dodgeball, athletics, basketball and netball.

One parent said: “I like the way the school makes the kids responsible and pays attention to their overall development.”



## School information

### Canary Wharf College Crossharbour

Selsdon Way, London E14 9GL

Tel: 020 3383 6100

Email: [secondary@canarywharfcollege.co.uk](mailto:secondary@canarywharfcollege.co.uk)

Website: [www.canarywharfcollege.co.uk](http://www.canarywharfcollege.co.uk)

Principal: Duncan Hewson

Age range: 11-19 years (currently only years 7 to 11)

Phase of education: Secondary

Gender: Mixed

Type of school: Academy

Day/Boarding school: Day

Religious character: Christian

Specialism:

Selection: Non-selective

Total number of pupils: 459 (annually expanding to 1,200)

### Admission arrangements

Number of places available for year 7: 81

Oversubscription criteria: See school website

Waiting list arrangements: See school website

Previous year's applications: See page 9

Previous year's appeals: See school website

### Open days

Mornings: Wednesday 5 October, 9am

Evenings: Tuesday 4 October, 5pm

### Uniform and general

Uniform: See school website

All students must adhere to the Uniform Policy

Exam results: See school website

Ofsted reports: Go to [www.reports.ofsted.gov.uk](http://www.reports.ofsted.gov.uk) and type the school name in search

School policies: See school website

**Central Foundation Girls' students receive an exceptionally high-quality of education and gain qualifications that place them as some of the top performing students in the country. We are a rich and diverse community and learners are challenged and supported to become confident, high achieving young women, well equipped to become leaders of the future.**

**At Central Foundation we:**

- Transform lives through our high expectations and high standards for all
- Challenge and support each other to excel through our passion for learning
- Value all members of our community and celebrate success
- Empower ourselves to be a positive, creative, innovative, and inspirational community.

### School organisation

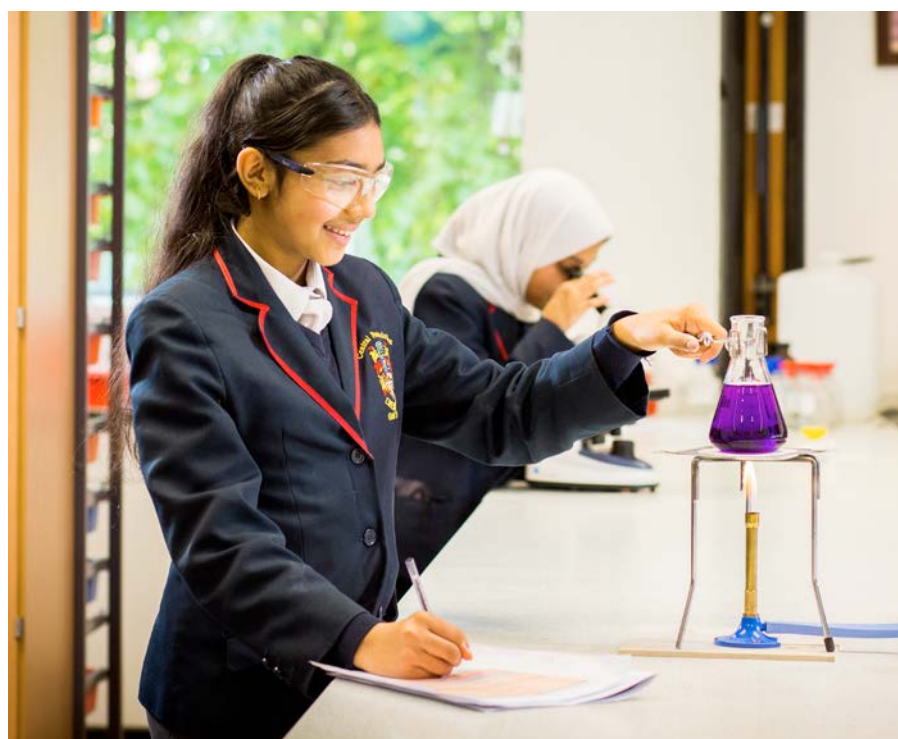
At Central Foundation, all students are given the opportunity to excel in all aspects of school life, not just in their academic studies.

Our rich transition programme allows us to work closely with primary schools to support the smooth transition of our pupils from Year 6 to Year 7. We welcome Year 7 students to Central and encourage them to continue their educational journey with us until Sixth Form.

Key Stage 3 students study a broad and balanced curriculum providing them with the knowledge and skills necessary to succeed well at further key stages. They study English, Maths, Science, Computer Science, Modern Foreign Languages, RE, History, Geography, Art, Design and Technology, Social Studies, PE, Drama, Music and PSHEE.

Key Stage 4 students are encouraged to study the English Baccalaureate made up of English, Maths, History or Geography and a language. They are also able to select a combination of other subjects to study to GCSE or the equivalent level.

Post 16, students have the opportunity to study a range of academic and vocational courses. Our highly successful Sixth



Form provision results in the majority of students progressing on to universities for higher education courses.

Sport plays an important part in our curriculum and Central excels in borough and national competitions. Our arts curriculum develops students' creativity, communication skills and empathy. Performing Arts, Design and Technology and Media Studies teams work in partnership with renowned institutions such as the BBC, Barbican and the Old Vic to enrich our provision and showcase our students' talents.

Central is one of the top performing schools in Tower Hamlets for pupil progress. Due to this success, the school

is a designated 'Leading Edge' school, able to provide support and advice for other schools across London.

### Learning support

We provide personalised learning support for all students through exciting programmes. We challenge and inspire our Higher Potential and students with SEND to exceed expectations. Our multi-agency Support Panel meets weekly to review vulnerable students' progress and put in place bespoke interventions to support progress. Students with EHCPs are supported through an individually tailored programme complete with Learning Assistants.

## Accommodation

Our buildings are purpose built and designed to support a 21<sup>st</sup> century education. We have a state-of-the-art Sixth Form centre, Science and IT wing and a sports hall with a dance studio and well-equipped gym. There is an auditorium space capable of hosting large-scale productions and conferences.

Our expansive dining room ensures that all pupils are able to enjoy mealtimes together. All buildings are fully wheelchair accessible and a range of facilities exist to provide disabled students with a quality educational experience. The safety of our students is very important to us so students may not leave the school premises at lunchtime.

## Pastoral care

Students must feel safe, happy, noticed, and cared for if they are to progress and excel. To this end, each year group has a head of year and every tutor group is staffed with two tutors, who meet with their students daily to listen, guide and provide support. We give students a voice in decision-making through our school council and numerous student leadership initiatives. The Code of Conduct provides

clear guidelines in terms of work, behaviour, attitude, uniform, attendance and punctuality.

We value and encourage our parents to become involved in the life of the school. Our home-school agreement is a partnership between students, parents and school, supported by a Home-School Support Worker, a school-based Attendance and Welfare Adviser, and Parent Outreach workers. Parents have the opportunity to discuss their daughter's progress with staff at Parents' Evenings and we provide parents with a detailed, termly report of their child's progress. We have an active Parents' Forum and for parents wishing to join our learning community, we offer classes such as English and IT.

## Extracurricular activities

Central prides itself on the extensive range of extracurricular activities before and after school each day, and at lunchtimes. We have excellent school holiday provision. Activities range from horse riding, canoeing and rock climbing to dance, media and drama. Others include the Duke of Edinburgh Awards and residential expeditions. The library is open before and after school for students to make use of.

Our after school Learning Lounge is staffed by Queen Mary University students who provide students with personal tutoring and homework support.

Activity and language development holidays are organised both in the UK and abroad. Students in all years visit universities and enjoy residential weekends. Students learn to appreciate a range of cultures outside of school through a variety of trips, journeys and activities in preparation for life in modern Britain.



## School information

### Central Foundation Girls School

25-33 Bow Road, E3 2AE

Tel: 020 8981 1131

Email: [welcome@central.towerhamlets.sch.uk](mailto:welcome@central.towerhamlets.sch.uk)

Website: [www.central.towerhamlets.sch.uk](http://www.central.towerhamlets.sch.uk)

**Headteacher:** Carla Prince

**Age range:** 11-19

**Phase of education:** Secondary

**Gender:** Girls

**Type of school:** Voluntary aided

**Day/Boarding school:** Day

**Religious character:** None

**Specialism:** None

**Selection:** Non-selective

**Total number of pupils:** 1,500

### Admission arrangements

**Number of places available for year 7:** 240

**Oversubscription criteria:** See page 12

**Waiting list arrangements:** See page 15

**Previous year's applications:** See page 9

**Previous year's appeals:** 1 upheld from 23 lodged

### Open days

**Mornings:** Thursday 29, Friday 30 September & Monday 3, Wednesday 5, Thursday 6, Friday 7 October, 9.30-10.30am

**Evenings:** Tuesday 4 October, 4.30-6.30pm

### Uniform and general

**Uniform:** See school website

**Exam results:** See school website

**Ofsted reports:** Go to [www.reports.ofsted.gov.uk](http://www.reports.ofsted.gov.uk) and type the school name in search

**School policies:** See school website

**At George Green's School, we pride ourselves on our passion for learning. Our values led education facilitates: 'Aspiration, Equality, Excellence' for everyone, raising the bar for all of our students, opening their eyes to the multitude of opportunities available and equipping them with the skills and knowledge to seize them.**



We value tradition and have a long standing history as the school hub for the Isle of Dogs and wider Tower Hamlets and Greenwich communities, however we are also a forward thinking and dynamic school, utilising up-to-date learning methods and unique business partnerships.

We have an extensive range of business and community partners who give every student access to life changing opportunities, from mentoring through to summer internships, enriching their experience far beyond the school curriculum.

We consistently attain positive progress scores at both GCSE and A level. This is indicative not only of the strength of our teaching and learning, but of the fact that we are committed to our values. We ensure that every child in our care gets the attention they deserve and need. We can do this because our staff 'know our learners' and are highly trained, passionate and dedicated professionals.

Dedication to our key principles gives George Green's students their strong sense of morality. We work hard to instill

a deep sense of pride in our children and help them develop the skills needed to make them high achieving, independent and happy learners, preparing them for university, or their career, and to take their place in the wider world.

It is a source of great pride that our work to help students become global citizens led UNICEF to recognise us as one of the first secondary schools in London worthy of their Rights Respecting Award, for which we achieved Gold status.

#### **Starting Secondary School**

Making the move from primary to secondary school is an important stage in every child's life and educational career. To ease this transition, we have created a dedicated induction programme that begins from the moment you receive an offer to our school.

From March until the day students start we host a series of events for parents to receive key information and speak to our senior leadership team members, while our new joiners begin to understand what secondary school looks like and meet their new friends. We have established this process because a positive transition

is crucial to incoming students' wellbeing and academic development.

#### **School organisation**

Once here, students enjoy a broad and balanced curriculum. In the Spring term of Year 9, students are guided by their teachers to make choices about their subjects in Key Stage 4. We work hard to make sure that the GCSE courses chosen match students' individual interests so that they are successful.

We run effective programmes for all learners. Maths and English have high priority and our various programmes, including LEXIA for every year 7 child, have had an impressive impact on improving literacy and numeracy levels. We also provide each child with their own Chromebook for them to use whilst at home and in school.

Beyond core subjects, our students have access to a thriving creative community. Students are encouraged to untap their full potential by taking part in activities they enjoy and that will develop confidence and enhance communication skills.

Following GCSEs, students can apply to join our high performing Sixth Form, and access our prestigious Scholarship Programme. Our Post-16 centre has a strong track record of sending students to the top universities and sought after high-level apprenticeship programmes.

## Learning support

Our work in the area of special needs is exceptional and is valued by students and their parents. We understand that additional support may be required by some students and have a dedicated learning support team. We also have a specially funded Resource Provision for children with EHCPs. We are happy to share more information about our specialist areas of SEND support with any parents or carers. Please send an email to [enquiries@georgegreens.com](mailto:enquiries@georgegreens.com) and we will get back to you.

## Accommodation

Our building is in a prime location overlooking the River Thames and the beautiful Naval College buildings in Greenwich and allows us to maintain our prestigious partnerships with national

and international organisations, based in Canary Wharf. Our refurbished school provides an innovative learning environment. Students are taught in bright teaching rooms, science labs and specialist technology spaces, and with excellent physical education spaces including modern changing facilities, outdoor table tennis and an impressive 3G AstroTurf football pitch.

## Pastoral care

We advocate strong parent partnerships. Parents are welcome to make appointments to visit us and our website gives up-to-date information on everything that is happening in the school. Homework is recorded in students' personal planners and online.

## Extracurricular activities

A wide variety of extracurricular activities are available for students before and after school and during the school holidays. Year 7's benefit from a full club programme that takes place on Wednesdays from 2pm that is dedicated just to them.

The school is open from 7.30am for students and a free breakfast club is provided. In addition to many business mentoring opportunities, there are a range of curriculum clubs together with sport and recreation opportunities every night after school as well as expressive arts opportunities. The Learning Resource Centre is open for students from 7.30am to 5pm every day.

We believe that George Green's School is exceptional, and we look forward to welcoming your exceptional child to join us.



## School information

### George Green's School

100 Manchester Road, E14 3DW

Tel: 020 7987 6032

Email: [enquiries@georgegreens.com](mailto:enquiries@georgegreens.com)

Website: [www.georgegreens.com](http://www.georgegreens.com)

Headteacher: Jon Ryder

Age range: 11-19

Phase of education: Secondary

Gender: Mixed

Type of school: Voluntary controlled

Day/Boarding school: Day

Religious character: None

Specialism: None

Selection: Non-selective

Total number of pupils: 1,150

### Admission arrangements

Number of places available for year 7: 210

Oversubscription criteria: See page 12

Waiting list arrangements: See page 15

Previous year's applications: See page 9

Previous year's appeals: 2 upheld from 23 lodged

### Open days

**Mornings:** Monday 26 to Friday 30 September, 9.15-10.15am  
Meet the Principal and take a tour. Places are limited and must be booked in advance by emailing [tmorgan@georgegreens.com](mailto:tmorgan@georgegreens.com)

**Evenings:** Wednesday 28 September, 4-6.30pm

### Uniform and general

**Uniform:** See school website

**Exam results:** See school website

**Ofsted reports:** Go to [www.reports.ofsted.gov.uk](http://www.reports.ofsted.gov.uk) and type the school name in search

**School policies:** See school website

**Langdon Park School will be widely respected as a community school that offers students a life-changing education. Our purpose is to inspire, ignite and unlock the creativity and imagination of every child and adult in our community.**

Pedagogy and professionalism are the driving forces in our school. Adults and students value excellence, tolerance, understanding, collaboration, and self-improvement. From a relentless focus on learning will emerge a sense of confidence, curiosity, resilience, and determination to meet the challenges of the modern world. Everyone will reflect upon and articulate their personal learning journey. We will have a shared purpose, a shared language and a relentless formative culture that challenges everyone to grow, improve, support, and raise standards.

We do this by working in partnership with parents and other schools, businesses, universities, and organisations. We are at the centre of the Poplar Partnership, which links Bygrove, Lansbury Lawrence, Manorfield, Marner, Mayflower, St Saviour's, Stebon, Wellington, and Woolmore schools with Langdon Park in exciting ways to provide the best possible education for children and support for their families.

Our sixth form continues to grow and we have increased our curriculum offer. All our students gain places at their preferred university and there is a significant increase in the number securing places at Russell Group universities. The sixth form admissions policy can be found at [www.langdonparkschool.co.uk](http://www.langdonparkschool.co.uk)

### School organisation

Each student is expected and encouraged to make the most of their abilities, skills and knowledge. Our school ethos is built around our 4BEs.

- Be professional. We expect all members of the school community to be punctual, smart and equipped for learning.
- Be inclusive. Everyone must be treated with respect, kindness and understanding.



- Be a learner. Students come to school to make every effort in class and extra-curricular activities to reach their goals. All staff participate in a professional development programme.
- Be knowledgeable. Through learning together students are equipped with knowledge to be successful and safe.

Our student support officers help us deal with any concerns that might affect learning. All students participate in a tutor programme and activities outside the classroom to support their social and emotional development.

### Learning support

We are committed to equal opportunities and access for all students. The head of learning support oversees the implementation of the special educational needs code of practice.

### Accommodation

We have the most extensive site of any school in Tower Hamlets and have recently completed a major rebuild and refurbishment, which has provided us with:

- new buildings for maths, science, drama, music, art, and learning support
- new computer suites
- an enlarged sports hall
- a new library, study centre and dining room.

Our sporting facilities are among the best in London. They include a sports hall, gymnasium, dance studio, fitness suite, cricket nets, floodlit tennis courts, and multi-use games areas and athletics facilities including an Olympic sized running track.

The Spotlight Centre provides fantastic learning, creative and performing arts facilities for our students including a professional quality performance space, music recording studio and rehearsal rooms.

## Pastoral care

Our pastoral programme ensures an effective and stress-free entry process into our school. We get to know each other by visiting primary schools, conducting interviews and by organising opportunities for new students to meet each other in their new tutor group in July.

The form tutor is in charge of the 'tutor group daily' and is the most important link between home and school. They will share any concerns with you.

Our Code of Conduct, written jointly by students and staff, emphasises the need for mutual respect and for the care of our school environment.

Older students from Year 10 are specially trained to help and advise younger children when they arrive. They are assigned to each Year 7 tutor group and their work continues into Year 8.

## Links with Families

Our learning contract is a simple outline of what is expected of students, teachers and parents for learning and teaching to be successful. We arrange a meeting for each new group of parents to meet their tutor in July.

The student planner passes messages between home and school. Homework tasks are recorded and parents and tutors are expected to sign it weekly.

There are progress review days and parents' evenings, where parents can have in-depth individual appointments with tutors and subject teachers to discuss their child's progress and set targets for future learning. These events are always very well attended.

We also work hard to keep parents informed of how we can work together to ensure our children succeed in the different stages of their education throughout the school.

## Extracurricular activities

A number of clubs operate before, during and after school, including a breakfast and homework club and a wide range of creative arts and competitive team sports.

An enormous number of visits take place throughout the year, ranging from one-day trips to theatres and museums, through to offsite residentials to develop study skills, and exchange visits with students from other countries.

## Physical accessibility

All classrooms within the school are wheelchair accessible and each building has an accessible lift. There are several suitably accessible toilet facilities within a short journey from each classroom.

## Admission criteria

Langdon Park follows the local authority's admissions policy and criteria.

## Visiting the school

We offer an open evening for parents and we would also encourage you, wherever possible, to come and see the school during the normal school day. Only then can you truly understand what it would be like for your child to come here. We know it can be difficult for working parents to visit during the school day, but we would ask that you make the effort to attend one of our open mornings in order to really appreciate all we have to offer. If you are unable to make any of the dates below, please contact the school and we will try to arrange a visit wherever possible.

## School information

### Langdon Park School

Bright Street, E14 0RZ

Tel: 020 7987 4811

Fax: 020 7537 7282

Email: [admin@langdonpark.org](mailto:admin@langdonpark.org)

Web: [www.langdonparkschool.co.uk](http://www.langdonparkschool.co.uk)

**Headteacher:** Nick Langham

**Age range:** 11-19

**Phase of education:** Secondary

**Gender:** Mixed

**Type of school:**

**Day/Boarding school:** Day

**Religious character:** None

**Specialism:** None

**Selection:** Non-selective

**Total number of pupils:** 900 and 120 in the Sixth Form

### Admission arrangements

**Number of places available for year 7:** 180

**Oversubscription criteria:** See page 12

**Waiting list arrangements:** See page 15

**Previous year's applications:** See page 9

**Previous year's appeals:** 0 upheld from 3 lodged

### Open days

**Mornings:** Tuesday 13 to Friday 16 September, 9.15-10.15am

**Evenings:** Thursday 29 September, 5.30-7.30pm

### Uniform and general

**Uniform:** See school website

**Exam results:** See school website

**Ofsted reports:** Go to [www.reports.ofsted.gov.uk](http://www.reports.ofsted.gov.uk) and type the school name in search

**School policies:** See school website

**We are an 11-16 mixed comprehensive school specialising in enterprise education. We will demand high expectations through academic rigour. Our GCSE results are above the National Average.**



London Enterprise Academy opened in September 2014 on Commercial Road, E1. Our vision is to create a truly outstanding school delivering the very best educational opportunities, to nurture academic excellence and enhanced ambition in all our pupils and to inspire the next generation of professionals and entrepreneurs from all backgrounds.

We are a school where:

- Every child will receive an outstanding education taught by highly qualified teachers.
- Pupils will achieve their full potential in a safe environment with strong discipline.
- A broad and balanced nationally recognised curriculum is adopted.
- Active involvement in a range of extracurricular and social enterprise activities is encouraged.
- Every parent will have a strong voice in shaping the future of the school.

- We are committed to equal opportunities as reflected in all aspects of school life.
- We welcome young people from all backgrounds and beliefs.

**GCSE results in 2019, 2020 & 2021 were above National Average with excellent passes in English, maths and 100% pass rate in Biology, Chemistry and Physics.**

## School organisation

London Enterprise Academy students receive high-quality learning and teaching.

- Our staff are well qualified to ensure students enjoy lessons, creating a positive and purposeful atmosphere throughout the school.
- Our students are supported by a varied, diverse and personalised curriculum, which meets the

needs of all, within an outstanding learning environment.

- We have developed effective partnerships with universities, businesses and the local community as part of our mentoring and careers programme. These links are fundamental to our pupils' success.
- We have established learning partnerships between pupils, parents and teachers through close links with local primary schools, community organisations, local, and international businesses and charities.
- We care for the well-being of our students and our staff and we invest in our community.
- We invest in our pupils to reach their full potential. We have supported our pupils to become Olympians and authors.

## Learning support

London Enterprise Academy is a fully inclusive school, committed to the achievement of all our pupils.

Our building is fully accessible. We have a range of learning interventions and programmes to support the achievement of all students, coordinated by our inclusion team. All students with special educational needs are provided with specific targeted support.

Together with our extensive provision for the more able students, including mentoring opportunities, master classes and residential trips, we are committed to supporting excellence at London Enterprise Academy.

## Accommodation

The school has excellent modern facilities, enabling us to deliver our broad and balanced curriculum as well as our rich programme of enrichment activities.

The school benefits from new fitted classrooms, five science labs, a multi-purpose sports hall and modern learning spaces as well as the latest technology to enhance learning.

## Pastoral care

The most successful schools are those that work in partnership with parents. We value the central contribution that parents make in supporting our children's achievement. We employ a parent liaison officer.

**"Pupils experiences are positive."  
"Pupils learn more as they move up the school."** – Ofsted 2022

We have developed effective home/school links to help support you and your child. We have a parents' forum which plays an important part in our school life. We also offer two positions on the governing body to parents. In 2018, we were awarded Leading Parental Partnership Award (LPPA).

We maintain contact using:

- Newsletters
- Parent evenings
- Open days
- Parent forums
- Text messages and emails
- Phone calls
- Information on the school website
- A range of celebration events
- Principal's drop-in meetings/ coffee mornings.

## Extracurricular activities

On Tuesday, Wednesday and Thursday afternoons, we offer our pupil's opportunities that will enrich their education by building relationships through sports and healthy activities, club activities and additional academic opportunities in areas other than curriculum subjects. Some of these include debate mate, cooking, exam skills, chess and many team sports.

Our students have taken part in a range of trips and visits which included Barcelona, Seville, Brussels, Cambridge, Norfolk, Essex, London and the surrounding area. We will continue to arrange more of these.

Our school core values are Leadership, Excellence, Ambition, Determination and Sincerity. Our vision is that the curriculum with all its enrichment opportunities will give our students the chance to develop these qualities. These opportunities give the students insight into a range of skills and subjects so that they can widen their perspectives and discover new talents.

All of our pupils are supported to attend a Post-16 provision to meet their needs and abilities including some of the more demanding Sixth Form colleges in East London.

## School information

### London Enterprise Academy

Aneurin Bevin House, 81-91 Commercial Road, E1 1RD

**Tel:** 020 7426 0746

**Email:** [info@londonenterpriseacademy.org](mailto:info@londonenterpriseacademy.org)

**Website:** [www.londonenterpriseacademy.org](http://www.londonenterpriseacademy.org)

**Headteacher:** Ashid Ali, MA (Ed), NPQH, FFCT

**Age range:** 11-16

**Phase of education:** Secondary

**Gender:** Mixed

**Type of school:** Academy

**Day/Boarding school:** Day

**Religious character:** None

**Specialism:** Enterprise with emphasis on The English Baccalaureate (EBacc) subjects

**Selection:** Non-selective

**Total number of pupils:** 431

### Admission arrangements

**Number of places available for year 7:** 120

**Oversubscription criteria:** See admissions policy on school website

**Waiting list arrangements:** As set out by LBTH, see page 15

**Previous year's applications:** See page 9

**Previous year's appeals:** 0

### Open days

**Mornings:** Monday 3 to Friday 14 October, 9-11am

**Evenings:** Thursday 29 September & Tuesday 4 October, 4-6.30pm

### Uniform and general

**Uniform:** See school website

**Exam results:** See school website

**Ofsted reports:** Go to [www.reports.ofsted.gov.uk](http://www.reports.ofsted.gov.uk) and type the school name in search

**School policies:** See school website

**Morpeth is a high-achieving 11-18 community school judged 'Outstanding' by Ofsted since 2007 in all aspects, including pupil achievement, behaviour and quality of teaching.**



As a school, we are proud to reflect the population of Tower Hamlets with a good mix of boys and girls from all ethnic groups in our borough. We pride ourselves on the positive relationships between pupils, staff, parents, and the community.

Our pupils have consistently achieved excellent results both at GCSE and at A Level, but have also experienced a breadth and richness of curriculum and of extracurricular opportunities during their time with us. Please visit our website at [www.morpethschool.org.uk](http://www.morpethschool.org.uk) to discover more.

### School organisation

Throughout the key stages, we have a focus on breadth of curriculum and on flexibility to meet pupils' interests and needs. At Key Stage 3, we aim to build on learning from primary school and to develop the skills needed for Key Stages 4 and 5. We do this by focusing on progression, participation, organisation,

and articulation both within and beyond the classroom. There is also a coaching programme in place which offers additional support with literacy and numeracy.

At Key Stage 4, we have an innovative curriculum model, which means that in addition to core subjects (English, Maths, Science, Religious Education and PE), pupils choose two options per year which are taught in mixed-age groups for the equivalent of a day a week. This allows pupils a greater breadth of choice and flexibility in devising their own pathways.

At Sixth Form, we have an extensive curriculum offer comprising of 26 A Level and BTEC courses as well as a full range of support to ensure students make the best choices and have excellent opportunities post-18.

All pupils from years 7-13 have access to a Google classroom for every subject, which is integral to supporting their learning outside of lessons.

### Learning support

Morpeth is a fully inclusive school. We aim for all of our children, whatever their special educational need, to achieve their potential both socially and educationally. Our aim is always to build independence in order to fully prepare pupils for life beyond school.

### Environment

Morpeth has benefited from extensive development to its buildings, ensuring that pupils have access to state-of-the-art facilities for specialist subjects such as art, music, drama, science, computing, and design and technology in addition to all teaching spaces being refurbished to a high standard.

Our sports facilities include a table tennis centre of excellence, dance studio, sports hall, gym and weights room; while our theatre and library are both very well used. We have a separate Sixth Form

centre in our Wessex Wing, which provides additional teaching, ICT, study and social space along with a dedicated library for students.

## Pastoral care

Moving to a secondary school is a very important stage in every child's education. We recognise this, and aim to ensure that all pupils feel safe and secure with us.

Pupils are organised into tutor groups and it is the tutor, with the support of the head of year, who will work closely with parents to develop a knowledge of each child. Together, we work to help them overcome any difficulties and to make sure they feel happy, are participating fully and making progress both socially and academically.

All year 7 and 8 tutor groups have their own dedicated teaching assistant who will work with all pupils in their lessons as well as supporting with the transition to secondary school.

Our behaviour policy promotes concern and care for every individual, mutual respect and a sense of personal

responsibility. This policy is shared and reinforced with pupils through time with their tutors, our citizenship, personal, social, and health education programme (fortnightly lessons) and weekly assemblies. We have a clear system of rewards and sanctions to support this.

## Extracurricular activities

At Morpeth we have an outstanding range of extracurricular opportunities to ensure that all pupils are encouraged to extend their studies, pursue their

interests and discover new talents. We firmly believe that participation in extra-curricular activities is an entitlement for all and to this end offer whole cohort opportunities throughout pupils' time with us, including team-building at an outdoor activity centre in Year 7, camping in Year 8, visits to universities outside of London, free instrumental tuition for all pupils, the opportunity to take graded music theory exams, fundraising for chosen charities, and history or geography residentials in Year 11.



## School information

### Morpeth School

Portman Place, E2 0PX

Tel: 020 8981 0921

Email: [morpethsmt@aol.com](mailto:morpethsmt@aol.com)

Website: [www.morpethschool.org.uk](http://www.morpethschool.org.uk)

**Headteacher:** Jemima Reilly

**Age range:** 11-18

**Phase of education:** Secondary

**Gender:** Mixed

**Type of school:** Community

**Day/Boarding school:** Day

**Religious character:** None

**Specialism:** None

**Selection:** Non-selective

**Total number of pupils:** 1,517

### Admission arrangements

**Number of places available for year 7:** 240

**Oversubscription criteria:** See page 12

**Waiting list arrangements:** See page 15

**Previous year's applications:** See page 9

### Open days

**Mornings:** Tuesday 13, Thursday 15, Monday 19, Wednesday 28 September & Monday 10, Friday 14 October, 9.30-11.15am

**Evenings:** Wednesday 5 October, 4-7pm

**Drop-in sessions:** Wednesday 21, Friday 29 September & Wednesday 12, Tuesday 18 October, 9.30-10.30am  
Book online to attend a drop-in session:

[www.morpethschool.org.uk/2166/admissions-2023](http://www.morpethschool.org.uk/2166/admissions-2023)

### Uniform and general

**Uniform:** See school website

**Exam results:** See school website

**Ofsted reports:** Go to [www.reports.ofsted.gov.uk](http://www.reports.ofsted.gov.uk) and type the school name in search

**School policies:** See school website

**Mulberry Academy London Dock is a brand new school opening in September 2023 with Year 7 students. Our aim is to ensure outstanding achievement for all, enabling our young people to lead successful and fulfilling lives, making a positive contribution to their own community and beyond.**



The Mulberry Schools Trust (MST) will be opening an outstanding, six forms of entry, 11-19 co-educational comprehensive school on the London Dock residential complex, replicating the outstanding provision in Mulberry Academy Shoreditch, Mulberry School for Girls and Mulberry Stepney Green Maths, Computing and Science College.

The new school will be a flagship school, delivered in partnership with the Local Authority and the Department for Education, creating another truly exceptional school in Tower Hamlets with first class facilities to rival anything that can be found elsewhere in London.

Mulberry Academy London Dock's innovative design uses Passivhaus technologies, creating a building with exceptional air quality and very low environmental impact. The architectural design will also create considerable green space with extensive facilities for sports and leisure, which will be open to the community.

Its ethos will promote community cohesion, inclusion and a rich social mix in which all children can thrive, regardless of background.

The school will open initially in 2023 with only Year 7 students, and will grow one year at a time, until full in 2028.

## School organisation

### Our curriculum

Every student will be given an education that has three key aims:

1. To engender high levels of academic and technical ambition with knowledge of how to learn and how to communicate one's learning with strong understanding, through high quality, confident writing and speaking. Students will learn the intellectual skills and technical language for the subjects they study so that they can perform at the highest level.

2. To provide rich personal development that includes a strong moral, spiritual and social foundation, to foster a highly developed imagination and creativity. Students will be taught to think critically and analytically, to be enquiring, thoughtful and questioning and to be open-minded with a strong understanding of the world around them.

3. To enable the development of students' high aspirations and self-determination through opportunities for leadership, engagement with higher education and the professional workplace and experience of different cultures. Students will become global ambassadors - for the school, their community and for British society.

Students will study a rigorous and challenging academic curriculum with a focus on the arts and STEM (science, technology, engineering and maths), but broad and balanced, and complemented by a wide ranging extra-curricular offer.

We expect students to stay in our Sixth Form - on the fifth floor of Mulberry Academy London Dock, where a full range of A level subjects will be offered, along with high levels of support to ensure all young people reach their destination of choice.

## Learning support

### Inclusion

Mulberry Academy London Dock is a fully inclusive school. We strive to ensure every young person is well supported, guided and achieves their very best. Students with SEND (special educational needs and disabilities) will be well supported through differentiated teaching in mainstream lessons, in class support as well as small group teaching in our specialised inclusions hub.

Teaching assistants, pastoral officers and learning mentors will all work collectively to meet the needs of individual students. We will positively celebrate each individual's success and value the contribution that they will make.

The new building will be fully accessible.

## Physical accessibility

All of our buildings and changing rooms are wheelchair accessible, with disabled toilets and lifts, allowing access to all floors.

## Pastoral care

Mulberry Academy London Dock believes that incredible pastoral care is the backbone of high achievement.

We will nurture and care for all our young people so they flourish and become healthy, responsible adults. Each year group will have a Head of Year, and a tutor, who see them twice each day, and who will develop strong ethos and community within the school. This will include rewards, trips and activities and a comprehensive programme for the teaching of PSHE.

We have highest expectations of students' behaviour and will develop our young people to be passionate about their learning, respectful towards others, innovative, creative, determined and to work for excellence in everything they do.

## Extracurricular activities

At Mulberry Academy London Dock we believe firmly in enriching our students' lives both inside the classroom and outside. This will include:

Leadership programmes such as Duke of Edinburgh's Award and Model UN, sports - competitive and recreational, residential and overseas trips, outdoor education and our Mulberry STEM Academy, in partnership with Mercedes-Benz Grand Prix Ltd.



## School information

### Mulberry Academy London Dock

10 Virginia Street, London, E1W 2AD

Website: [www.mulberrylondondock.org](http://www.mulberrylondondock.org)

**Headteacher:** To be appointed

**Age range:** 11-19

**Phase of education:** Secondary

**Gender:** Co-educational

**Type of school:** Academy within the Mulberry Schools Trust

**Day/Boarding school:** Day

**Religious character:** None

**Specialism:** None

**Selection:** Non-selective

**Total number of pupils:** 1,150

### Admission arrangements

**Number of places available for year 7 in 2023:** 180

**Oversubscription criteria for 2023:** See page 12

**Waiting list arrangements:** n/a

**Previous year's applications:** n/a

**Previous year's appeals:** n/a

### Open days

**Mornings:** TBC – please check the school website

**Evenings:** Tuesday 4 October, 4pm & 5pm (two slots, please register on website)

### Uniform and general

**Uniform:** See school website

**Exam results:** See school website

**Ofsted reports:** Go to [www.reports.ofsted.gov.uk](http://www.reports.ofsted.gov.uk) and type the school name in search

**School policies:** See school website

Mulberry Academy London Dock is currently under construction and will open on a temporary site in September 2023. It will be located at the former Shapla school site at Wellclose Square, E1 and is being refurbished to meet the needs of our Year 7 cohort.

**At Mulberry Academy Shoreditch, we offer academic excellence, a safe and exciting school, and an exceptional curriculum bursting with opportunities and experiences. We are ambitious for all of our students.**

Mulberry Academy Shoreditch students thrive in a caring, supportive and nurturing environment, where they are continuously inspired, motivated and encouraged. Our commitment is to ensure that students leave us fully prepared as independent and successful young adults.

Our staff and students work closely together to achieve their best, and through our extensive partnerships, the school is a rewarding and fulfilling place to learn. Throughout the academic year, we host an astounding array of events, from sports fixtures and drama productions to music festivals and winter fairs. These events provide students with important life skills such as teamwork, entrepreneurship and public speaking.

Our lovely House system is really fun and exciting with students, staff and governors all becoming members of one the six Houses: Tower, Tate, Trafalgar, Thames, Globe or Barbican. Our House system enhances our students' learning and experience as they journey with us.

Students will gain access to a wealth of leadership, cultural, sports, musical, entrepreneurial and social action activities, programmes and initiatives that are exemplary. Examples of this are our Mulberry Schools Trust Societies which are linked to prestigious London Universities and our 'Charter' in which ALL students have to complete a set of tasks between starting in Year 7 and finishing school in Year 11.

The school's pastoral care is of the utmost standard and we have high expectations of our students' behaviour. Our vision at Mulberry Academy Shoreditch is to ensure that every student maximises their potential. We will empower students to become independent learners, critical in their thinking, informed in their choices and confident in their ability to succeed in the modern world.



## School organisation

### Our curriculum intent

Our curriculum ensures that students not only have a love of learning, but are passionate about what they learn and how they learn it. We achieve this through a blended curriculum that is challenging, coherent, enriching, highly ambitious and fundamentally inclusive of all students.

It provides every opportunity so that our students can be sure of:

- The highest academic achievement
- Encouragement of creative expression
- A commitment to social action and the community
- The best possible preparation for each next learning stage towards aspirational destinations
- An equally rich and challenging face to face and remote learning experience.

### Sixth form

Rich and diverse, caring and ambitious; our aim at Sixth Form is to ensure that every student leaves us with an amazing profile of qualifications and experiences that will ensure their success in life.

Our Sixth Form students have access to scholarships worth £500, fantastic trips and rewards, the Mulberry STEM Academy in partnership with Mercedes-Benz Grand Prix Ltd and the very best mentors, academic tutors and Oxbridge coaches – all with a focus on moving to the very best destinations. Other external partners include NCS the Challenge,

Model United Nations, Into University and we are one of the only schools in London to be recipients of the KPMG mentoring programme.

## Learning support

### Inclusion

Mulberry Academy Shoreditch is proud to serve the community as a fully inclusive school and we love, value, support, and encourage all of our students. We provide extensive, personalised support packages dependent on the specific needs and talents of our students. We value the contribution that every individual can make at the school, regardless of ability or background.

Students with Special Educational Needs and Disabilities (SEND) are part of our vision, practice and GCSE success. They are able to flourish as independent and confident learners. SEND provision has a dedicated and well-equipped suite of rooms and is home to the Learning Support Unit and Pastoral Support Centre. Our highly skilled and committed team of teaching assistants and team of learning mentors support students both in and out of the classroom.

## Environment

### Physical accessibility

All of our buildings and changing rooms are wheelchair accessible, with eight disabled toilets and three lifts, allowing access to all floors.

## Pastoral care

### Behaviour and expectations

Expectations are high for our students and they take full responsibility for their behaviour as outlined in our student pledge. A reward scheme is in place to praise, reward, encourage, and inspire young people to succeed.

We have a strong primary transition programme in place with lots of exciting events taking place during Easter and Summer and after students have joined us. We have close relationships with the local primary schools where our students come from.

### Parent communication

We recognise that positive working relationships with students and their families are key to our academic success. Student attainment is rigorously monitored and parents and carers receive half termly reports detailing their child's academic progress, attendance, punctuality, and attitude to learning.

Every Friday, students and parents receive a letter from the Headteacher and a weekly newsletter, detailing all of the latest news and best stories of the week.

## Enrichment activities

Students engage in a range of stimulating activities to help develop an exceptional range of skills. Students benefit from an impressive assortment of trips and events. Activities include House events, arts, culture, drama, sports, music, overseas visits, modern foreign languages, volunteering and fundraising. Year 7 students have a fun programme of key activities including: Kayaking, Cycling at the Velodrome, Skiing and rock climbing.



## School information

### Mulberry Academy Shoreditch

Gosset Street, E2 6NW

Tel: 020 7920 7900

Email: [parents@mulberryacademyshoreditch.org](mailto:parents@mulberryacademyshoreditch.org)

Website: [www.mulberryacademyshoreditch.org](http://www.mulberryacademyshoreditch.org)

Headteacher: Mrs Ruth Holden

Age range: 11-19

Phase of education: Secondary

Gender: Co-educational

Type of school: Academy within the Mulberry Schools Trust

Day/Boarding school: Day

Religious character: None

Specialism: None

Selection: Non-selective

Total number of pupils: 1,250

### Admission arrangements

Number of places available for year 7: 210

Oversubscription criteria: See page 12

Waiting list arrangements: See page 15

Previous year's applications: See page 9

Previous year's appeals: 0

### Open days

Mornings: Monday 19 to Thursday 22, Monday 26 to Thursday 29 September & Monday 3 to Thursday 6 October, 9.15-10.30am

Evenings: Thursday 6 October, 4-6pm

### Uniform and general

Uniform: See school website

Exam results: See school website

Ofsted reports: Go to [www.reports.ofsted.gov.uk](http://www.reports.ofsted.gov.uk) and type the school name in search

School policies: See school website

**We aim to enable all pupils to become confident, creative leaders with a love of learning, who will make a positive contribution to our community, now and in the future.**



Mulberry School for Girls is a vibrant, high achieving and over-subscribed girls' comprehensive school for pupils aged 11 to 18. We are an eight-form entry school with approximately 400 places for pupils in the Sixth Form.

We believe that education is a life chance and that every pupil is entitled to the fullest and richest educational experience. Every individual is valued and respected, enjoying the highest possible standards of educational provision.

Mulberry aims to create a learning and teaching environment in which every pupil enjoys their education, feels secure and can flourish and reach their full potential. We meet the educational and social needs of every pupil, regardless of ability, aptitude, ethnic background or disability, providing for both their physical and emotional needs.

High standards of achievement and academic attainment for all is promoted, which enables every pupil to leave Mulberry enriched with skills and experiences that will further develop talents and gifts.

The school assists pupils to become confident, creative and questioning young women with the ability to lead in – and

contribute to – a range of fields including work, political and social citizenship, the community and family life.

Our pupils have access to an enviable list of leading organisations and programmes, including the Mulberry STEM Academy in partnership with Mercedes-Benz Grand Prix Ltd, Model United Nations and the WOW Festival.

Positive links with our parents/carers and the community are developed through partnerships and by making the school's resources available for community learning throughout the year.

## School organisation

The curriculum is challenging, broad and balanced from Years 7-13, and provides a range of academic and career pathways, as well as a wide programme of extracurricular learning, including arts and international activities.

Mulberry teaches core and foundation subjects largely in line with the national curriculum. At Key Stage 3 (ages 11-14), this includes English, maths, science, design and technology, computing, expressive arts, PE, modern foreign languages, religious studies, history,

geography, and personal health and social education with citizenship. These subjects may be themed and progress is formally assessed.

In Key Stage 4, pupils study core national curriculum subjects, with computing offered as an additional option alongside other subjects to GCSE level.

The curriculum on offer to Sixth Form pupils allows them to take courses from entry to advanced level, including a range of vocational routes. The curriculum offer is complemented by collaboration with other schools and providers. Each year, our hardworking Sixth Form pupils secure places at some of the UK's top universities.

## Learning support

Mulberry is an inclusive environment. Our building is accessible for mobility-impaired pupils. We have a multi-sensory learning laboratory for those with visual, hearing or complex learning requirements and employ a Special Educational Needs Coordinator, who is supported by specially trained special educational needs and disabilities (SEND) teachers and teaching assistants. We also work closely with a range of therapists and medical practitioners.

To afford all pupils with the widest range of learning experiences, we teach in mixed as well as same ability groups.

Some learning also takes place in mixed age groups. English language support is available to those who are at an early stage of learning English as an Additional Language.

## Environment

Mulberry has a modern school building, providing the best possible accommodation and facilities. The school benefits from contemporary, specialist teaching bases in all curriculum areas, including dance and drama studios, a music suite, sports complex, 11 science laboratories, a newly equipped technology wing with specialist catering/ restaurant facilities, two libraries and seven computer/ICT rooms. In addition to the ICT bases, faculties have classrooms, which are equipped with computers, and all other classrooms have ICT facilities. The school also benefits from complete Wi-Fi coverage.

To support access, ramps are in place where needed and stairs are painted according to advice from

the visual impairment service. There are lifts throughout the site, with teaching assistants escorting pupils where necessary.

## Pastoral care

We are committed to pastoral care to support the personal and academic progress of each pupil. We value links with parents/carers and the community and consider education to be a partnership between home and the school. Our teaching staff work closely with primary schools to ensure that our work supports the continuation of their learning.

We practice an open door policy, where parents/carers are welcome at all times. They are encouraged to visit, not only for formal occasions but to discuss issues with staff as they arise. This is essential if parents/carers are to support the learning process and the achievement of their daughters.

Pupils are expected to follow our uniform requirements and behaviour policy. Discipline is built upon understanding of, and respect for, other people. Great emphasis is placed on attendance and punctuality, and these are monitored daily.

## Extracurricular activities

Mulberry is a centre for excellence for out-of-hours learning. We offer after school and lunchtime activities to learn new skills, broaden horizons and develop self-confidence and leadership.

Mulberry has a dedicated women's education team who develop partnerships and run activities, which are tailored to supporting the development of pupils to become questioning, well-mannered, inspirational, and confident young women at the end of their school career.



## School information

### Mulberry School for Girls

Richard Street, Commercial Road, E1 2JP

Tel: 020 7790 6327

Email: [info@mulberryschoolforgirls.org](mailto:info@mulberryschoolforgirls.org)

Website: [www.mulberryschoolforgirls.org](http://www.mulberryschoolforgirls.org)

Headteacher: Ms Alice Ward

Age range: 11-18

Phase of education: Secondary

Gender: Girls

Type of school: Academy within the Mulberry Schools Trust

Day/Boarding school: Day

Religious character: None

Specialism: None

Selection: Non-selective

Total number of pupils: 1,497

### Admission arrangements

Number of places available for year 7: 240

Oversubscription criteria: See page 12

Waiting list arrangements: See page 15

Previous year's applications: See page 9

Previous year's appeals: 1 upheld from 15 lodged

### Open days

Mornings: Monday 19 to Wednesday 21 September, 9.30-10.30am

Evenings: Tuesday 27 September, 4-6pm

### Uniform and general

Uniform: See school website

Exam results: See school website

Ofsted reports: Go to [www.reports.ofsted.gov.uk](http://www.reports.ofsted.gov.uk) and type the school name in search

School policies: See school website

**Mulberry Stepney Green Maths, Computing and Science College is part of the Mulberry Trust. The school has consistently been one of the highest performing schools within Tower Hamlets. The school's attainment levels for Key Stage 4 and 5 are well above national levels. Mulberry Stepney Green is a mixed school, ensuring the very best education for boys and girls, from Year 7 to Year 13.**

Many of our students progress to some of the top universities in this country. There is a real drive for high standards, ensuring all students leave the school with exceptional qualifications. Mulberry Stepney Green MCSC continues to be a popular choice for parents. The school is an academy for boys and girls and a member of The Mulberry Trust of Schools.

#### **How do we involve parents and keep in touch?**

There is a parents' newsletter each term. There is a parents' calendar of the main events in the college.

There is an annual parent/teacher consultation meeting, divided by year groups. There are the annual and termly interim reports on your child's progress at school. The Headteacher is available to meet parents without any appointment on Thursdays from 4pm- 5pm. Parents may arrange to see the Headteacher at other times by making an appointment.

Parents can ring the school during the school day to make an appointment to see a teacher, if they are not teaching. A parent/visitor room is available so parents and staff can meet and talk. There are parent governors on the governing body.

### **School organisation**

#### **What will students be taught?**

At Key Stage 3, Years 7 to Year 9, the national curriculum subjects are taught and there is a broad and balanced curriculum.

At Key Stage 4, Years 9, 10 & 11, the core subjects are taught at GCSE. Your child will also have a range of option subjects to choose from at GCSE. These include: French, Bengali, Art, Media Studies,



History, Geography, Sports Studies, Business studies, Design and Technology, IT and Computer Science.

At Key Stage 5, the school offers a range of A Levels and BTEC qualifications at level 3.

**The Sixth Form admissions policy can be found on the schools website: [www.stepneygreen.towerhamlets.sch.uk](http://www.stepneygreen.towerhamlets.sch.uk)**

### **Learning support**

#### **How are pupils with special educational needs and disabilities (SEND) supported?**

We are committed to including all pupils so that they can access the curriculum.

Support for students with SEND will be provided in a variety of ways, mainly by in-class support but also through small group work. This is organised by the special educational needs coordinator (SENCO) and a team of teaching assistants.

There are teachers specifically employed to improve our students' English language and literacy skills. The learning support unit helps students who may be experiencing a temporary difficulty in mainstream lessons for a variety of reasons. Local authority agencies work with staff in school to help students who may be experiencing similar or longer-term difficulties.

# Mulberry Stepney Green Maths, Computing and Science College

# 3

## Environment

### What are our buildings and facilities like?

The older buildings date from the 1960s. There have been recent additions that include:

- a spacious library with ICT facilities
- Humanities classrooms
- a learning support centre, fully equipped with ICT
- a sports centre with roof-top play pitch
- a teaching block with state-of-the-art learning facilities
- a new state-of-the-art Sixth Form block.

The school also boasts a state-of-the-art sports hall and an additional teaching block. The new facilities incorporate a prayer area for student use. The new build has added greatly to the existing outstanding provision, ensuring our students have a school fit for the 21<sup>st</sup> century.

The school is fully Disability Discrimination Act compliant and has a treatment room for medical use.

## Pastoral care

The team leader for Year 7 and their tutors will ensure the move from primary to secondary stage is successful

and that the students settle in well to their routines. The Key Stage 3 team leader and team will have oversight of students' welfare and academic progress in Years 7 and 8.

The Key Stage 4 team leader and tutors will ensure the students are successfully prepared for their GCSE examinations and their move to Post-16 education.

Students will be placed in a tutor group and the form tutor will see and monitor your child's daily attendance, punctuality and uniform. All students are issued with a school planner in which your child must record their homework and you may write notes to teachers – the planner aids communication.

We encourage students to develop their responsibilities and show mutual respect for all who work and learn here. There is a thriving School Council and a system of prefects in Year 11, including a Head Prefect and Deputy Head Prefects. In the sixth form we have a school president and a deputy president. There is a home school agreement which we, pupils and parents all sign.

Merits and certificates are awarded for good work, effort and behaviour.

## Extracurricular activities

### What extracurricular activities are offered?

We recognise that such activities broaden and expand students' talents and interests.

- The library is open from 7.30am, at lunchtimes and after school until 5pm.
- The physical education department runs football and table tennis matches at lunchtime, after school and on Saturdays.
- The Duke of Edinburgh's Award scheme is well established at the school.
- Revision classes and extra lessons are a regular feature of life during the holidays and on Saturdays.
- HSBC bank has provided funding of £100,000 for 30 students per year to go on a week's outward bound course in a national park.



## School information

### Mulberry Stepney Green Maths, Computing & Science College

Ben Jonson Road, E1 4SD

Tel: 020 7790 6361

Email: [mail@mulberrystepneygreen.org](mailto:mail@mulberrystepneygreen.org)

Website: [www.mulberrystepneygreen.org](http://www.mulberrystepneygreen.org)

Headteacher: Paramjit Bhutta

Age range: 11-18

Phase of education: Secondary

Gender: Mixed; post 16 mixed

Type of school: Academy

Day/Boarding school: Day

Religious character: None

Specialism: None

Selection: Non-selective

Total number of pupils: 1,270

### Admission arrangements

Number of places available for year 7: 190\*

Oversubscription criteria: See page 12

Waiting list arrangements: See page 15

Previous year's applications: See page 9

Previous year's appeals: 0 upheld from 5 lodged

### Open days

Mornings: Friday 9, Thursday 15, Tuesday 20, Thursday 29

September & Friday 7, Tuesday 11, Thursday 20 October, 9-11am

Evenings: Wednesday 21 September, 4-6pm

### Uniform and general

Uniform: See school website

Exam results: See school website

Ofsted reports: Go to [www.reports.ofsted.gov.uk](http://www.reports.ofsted.gov.uk) and type the school name in search

School policies: See school website

\*During the period in which the school changes from a boys school to a mixed school there will be special admission arrangements in place. For more information please see notice on page 11.

**Oaklands School is a fully inclusive comprehensive school, proudly serving children and families in Tower Hamlets. We are a learning community that provides the best education for our students, enabling them to reach their academic potential and prepare them to make a positive contribution to society.**

We have high expectations of our students and this is demonstrated by the Oaklands Ethos, **“this is a school whose ethos is truly reflected in the pupils – they work hard, show kindness to all and take up opportunities to broaden their experiences”** – Ofsted March 2022.

We are proud of our learners and when they leave Oaklands, they leave well prepared for the next stage of their learning journey.

Our commitment to excellence has seen the school be a high performing school at GCSE and post-16. Our examination results are well above the national average for all students, irrespective of the starting point from primary school. Our results are strong in a wide range of subjects, e.g English, mathematics, sciences, art, ICT and languages, with girls achieving consistently high in all areas.

The vast majority of our students progress to our Sixth Form where they study a range of courses at A level or BTEC preparing them for University or Apprenticeships. Our excellent results and careers guidance ensures that many students go on to study at prestigious Russell Group universities: Oxford, Cambridge, UCL and King's College London. We also have high success rates for students gaining places on competitive courses, regularly sending students to medical school.

As a long established British Council international school, we regularly welcome visitors from across the world, as well as our students and staff visiting other countries, from Spain to Rwanda. These experiences give our students a broader perspective on the world we live in.



### School organisation

Oaklands is a mixed 11-18 school. Due to our repeated achievements over time, the local authority has allowed us to increase our admissions number from 120 to 180 students in each year group, so that more families can benefit from an Oaklands education. We have over 200 students in the Sixth Form with around 80% of our year 11 students transferring every year, trusting us to provide them with a high quality post-16 education.

Oaklands has a broad and balanced curriculum, with a wide range of subjects, which follows the National Curriculum. From Year 7 our curriculum provides students with a good solid foundation of knowledge and skills that they need to succeed at the next stage of their education and beyond. Teaching and Learning is always at the heart of what we do and our curriculum is ambitious and challenging. Our teachers are passionate and share their deep subject knowledge and enthusiasm, making all lessons interesting and purposeful. We teach subjects in a logical order and increase the depth and complexity of knowledge

over time. We adapt our curriculum to suit the needs of our students, ensuring no one is left behind. Our inclusiveness is very much evident in our curriculum, for example in providing a specific post-16 course for our most vulnerable learners.

### Learning support

We are committed to ensuring that our school is open and accessible to all students, whatever their particular need. All students have access to Google Classroom - a virtual learning platform. This enables students to interact with teachers, allowing teachers and students to share work and give support for learning. Students who need extra help with their learning are closely monitored by the Special Educational Needs department. There is specialist help for students whose first language is not English, as well as Speech and Language programmes. We also offer comprehensive intervention programmes for all students, for example catch up reading programmes. We are a full access school building, with lifts and accessible toilets for students with physical disabilities.

## Environment

We have a unique main site split across two buildings, connected by a bridge. Our facilities are modern and we have recently expanded our buildings to include a brand new Sixth Form centre. We are working closely with the local authority to expand our current provision. In the near future we will have further investment in our buildings, including state of the art sporting facilities.

## Pastoral care

At Oaklands, keeping students safe is our number one priority. We have a strong culture of safeguarding and our caring ethos is reinforced by all staff to ensure our students feel supported through their education. Visitors to Oaklands frequently comment on the family feel of the school, where we look out for each other and look after each other. Our students are kind, friendly and well behaved in and out of lessons.

We pride ourselves on knowing and understanding our students' needs so that any barriers to learning are overcome as quickly as possible. Our dedicated pastoral team consists of non-teaching staff, which ensures they are always available to provide support to Oaklands' students and parents.

We have a strong Personal Development Curriculum in which students learn about issues such as their rights, equalities, how to stay safe, healthy relationships, good physical and mental health and where to get support if needed.

## Extracurricular activities

Taking opportunities is an important part of our ethos. Our students take part in a range of activities to develop their sense of self-worth, respect and confidence. Oaklands provides many extra-curricular activities to give students the opportunity to extend their learning and occupy their time productively. We have a yearly school production for students to develop

and showcase their talents. We value sport and all it can provide, from physical fitness to developing resilience to being gracious winners and losers. We have full-time table tennis and basketball programmes alongside many other sporting opportunities. We have strong partnerships with banks, universities and organisations like Aim to Attain to encourage academic development. We provide space after school for homework / independent learning. During the last week of term we hold a Cultural Activities Week where students are given opportunities to extend their learning outside the classroom. These range from days at local museums to international travel.



## School information

### Oaklands School

Old Bethnal Green Road, E2 6PR

Tel: 020 7613 1014

Email: [reception@oaklands.towerhamlets.sch.uk](mailto:reception@oaklands.towerhamlets.sch.uk)

Website: [www.oaklands.towerhamlets.sch.uk](http://www.oaklands.towerhamlets.sch.uk)

Headteacher: Simon Ramsay

Age range: 11-18

Phase of education: Secondary

Gender: Mixed

Type of school: Community

Day/Boarding school: Day

Religious character: None

Specialism: None

Selection: Non-selective

Total number of pupils: 950

### Admission arrangements

Number of places available for year 7: 180

Oversubscription criteria: See page 12

Waiting list arrangements: See page 15

Previous year's applications: See page 9

Previous year's appeals: 0

### Open days

Mornings: Thursday 22, Tuesday 27 September & Monday 3, Friday 14, Wednesday 19 October, 9.20-10.30am

Evenings: Wednesday 28 September, 4-6.30pm

### Uniform and general

Uniform: See school website

Exam results: See school website

Ofsted reports: Go to [www.reports.ofsted.gov.uk](http://www.reports.ofsted.gov.uk) and type the school name in search

School policies: See school website

**Stepney All Saints is a truly outstanding Church of England School (Ofsted 2021) with the highest standards of behaviour, discipline and attainment.**



We are incredibly proud of our school. Our curriculum provides intellectual rigour and challenge alongside a commitment to the development of character, resilience, and leadership. The bedrock of this is outstanding pastoral care and a deep respect for all which underpins our church school community.

Our school vision is “achieving excellence and inspiring generations, the All Saints Way” in a community where we learn together, we pray together, and we achieve together.

## School organisation

### Our curriculum

All students are provided with their own laptop ensuring full and equal access to technology. This ensures that students’ pre-learning at home allows all lessons to focus on the application of knowledge and its evaluation and analysis.

Our students flourish through a broad and balanced curriculum which offers a wide range of subjects throughout Years 7 to

11 that meets the needs of all students. The vast majority of students in Years 10 and 11 study for the suite of EBacc subjects and Sixth Form students have a large choice of subjects to study in depth.

### Our sixth form

We have an exceptional range of courses including A-levels and BTECs. Levels of achievement are among the highest in Tower Hamlets with many students going on to study at a Russell Group university each year and many progressing on to top apprenticeships. In addition, our Stepney All Saints Champions programme provides dedicated pathways for Oxbridge, Medicine, Law, Humanities and many more.

More about our Sixth Form, including our admissions policy, can be found at [www.stepneyallsaints.school/sixth-form](http://www.stepneyallsaints.school/sixth-form)

## Learning support

Stepney All Saints is an inclusive school where every individual is valued and supported. We create a learning

environment that supports everyone. This means that we know everyone is different and we help all our young people to achieve their best. We prepare carefully to welcome new students into our community putting them at the centre of our plans and the decisions that affect them.

We work in partnership with our students, their families, and our colleagues. That means everyone is our colleague. We show young people that we listen to them; we respect them; and we care for them.

## Accommodation

Stepney All Saints is unique in London in having its own state of the art 20-metre swimming pool. Every student learns to swim as part of the PE curriculum. Our sports centre includes a full-size sports hall and a multipurpose all-weather sports pitch, which is used for football, hockey as well as many other sports. In addition, the school boasts a drama theatre and recording studio for the performing arts and a refurbished school library.

# Stepney All Saints CofE Secondary School

# 3

## Pastoral care

When people talk about our school, they use words such as “family”, “respect” and “community”. We live out these values every day in our school and they form part of our outstanding pastoral care. This is why our students thrive.

The orderly environment of our school means students learn well. Our code of conduct was produced in partnership with students, staff and governors and underpins our school's ethos and values. In our school we respect each other and students know ‘they are the most important people in the building’. That our students are secure, safe and cared for by staff is paramount. Their behaviour is outstanding.

We are a friendly and informal school, and incredibly hard working. We welcome parents to get in touch if they would like to speak to a member of staff about any questions they may have. We host regular parents’ coffee mornings where parents can meet and discuss issues in a friendly informal way over a cup of tea or coffee. These mornings often have a theme and involve presentations by school staff.

## Extracurricular activities

All students in Years 7, 8 and 9 attend at least one enrichment activity per week, for example skateboarding, sessions in debating, computer coding, drama, engineering, learning new languages as well as schemes such as the Duke of Edinburgh's Award. Stepney All Saints students also take part in an extensive careers advice and guidance programmes working with businesses and universities including Oxford and Cambridge.

Thanks to grants from the Portal Trust, students attend residential courses, summer schools and field study visits. In addition, we run trips locally and nationally including to the Argoed Lwyd Outdoor Education Centre in Wales and, in the last year, as part of our international work with organisations such as the British Council, students have had the opportunity to visit to Italy, Greece and Spain as well as participating in global projects with partner schools from South Korea to Nepal.



## School information

### Stepney All Saints CofE Secondary School

Stepney Way, E1 0RH

Tel: 020 7790 6712

Email: [info@stepneyallsaints.school](mailto:info@stepneyallsaints.school)

Website: [www.stepneyallsaints.school](http://www.stepneyallsaints.school)

Headteacher: Paul Woods

Age range: 11-19

Phase of education: Secondary

Gender: Mixed

Type of school: Voluntary aided

Day/Boarding school: Day

Religious character: Church of England

Specialism: None

Selection: Partial selection in modern foreign languages

Total number of pupils: 1,490

### Admission arrangements

Number of places available for year 7: 208

Oversubscription criteria: See school website

Waiting list arrangements: See school website

Previous year's applications: See page 9

Previous year's appeals: 2 upheld from 70 lodged

### Open days

Register online to attend at [www.stepneyallsaints.school](http://www.stepneyallsaints.school)

Mornings: Thursday 15, Wednesday 21 September & Tuesday 4 October, 9.30-11am

Evenings: Monday 26 September, 4.30-6.30pm

### Uniform and general

Uniform: See school website

Exam results: See school website

Ofsted reports: Go to [www.reports.ofsted.gov.uk](http://www.reports.ofsted.gov.uk) and type the school name in search

SIAMS report: See school website for the SIAMS (Statutory Inspection of Anglican and Methodist Schools) inspection report

School policies: See school website

## St Paul's Way trust is a popular, vibrant and successful 'all through school' and 'Founding School for the University Schools Trust'.

From September 2016, we became the founding school of the University Schools Trust, an exciting new multi-academy trust, with Queen Mary University of London as the lead sponsor. We are committed to providing a transformational education for all our students rooted in an exceptional curriculum and co-curriculum offer.

Ofsted has judged the school to be outstanding in all areas and praised the school for its "relentless pursuit of scholarship and excellence".

As 'The university school in the heart of east London' we expect each of our graduates to be fully prepared for the opportunities and the demands of the adult world. During each child's school career, we place strong emphasis on our core values of Aspiration, Integrity and Community; as a result, our students gain the powerful knowledge, character, confidence and awareness to become successful global citizens.

Science, the Arts and Sport thrive in our state-of-the-art facilities which include our £1 million science centre which enables superb practical opportunities. Arts specialisms provide creative and investigative learning opportunities for all our students. Professor Brian Cox, our patron, directly supports our work regularly attending our Science Summer School.



At Key Stage 4, students are given a wide choice of subjects, offering every learner the best chance of success. Routes into higher education and employment are well planned from an early stage and ably supported by the careers team whose provision has been externally certified as 'Gold Standard'.

The sixth form admission policy can be found on the school's website: [www.spwt.net](http://www.spwt.net)

In addition to their academic studies, students also access high quality enrichment and work experience opportunities.

### School organisation

#### Our Student Culture

Our aspirational approach with its 'Warm & Friendly but Strict' student culture provides a safe and focused atmosphere where students challenge themselves to be the best they can be. As a result they excel at all key stages.

#### Our Curriculum

All students in years 7-9 follow a broad and balanced curriculum, including English, mathematics, science, art and design, computing, geography, history, MFL (including Latin) and technology.

#### Admissions

Since 2014, we have adapted our admissions criteria to accept five per cent of students based on musical aptitude. These students follow a bespoke music curriculum and take part in a wide range of performances and additional opportunities.

#### Academic Sixth Form

Able supported by our Trust Partners, our A Level programme is designed to prepare students to apply to the best universities and apprenticeships in the country. Our Trust bursaries and scholarships support students as they progress to university and high-level apprenticeships.

#### Primary Provision

Since September 2014, we have been welcoming children to our reception and from January 2017 to our nursery. Students from our primary school get a guaranteed place in our secondary school as well as benefiting from an enhanced transition model.

Working with youngsters of all ages from reception through to university/employment enables our team to develop a truly holistic view of the child and to provide the best possible education.

## Learning support

Our school is a diverse and inclusive learning community. We have considerable experience in supporting students at the early stage of learning English and those who have difficulty with their studies, as well as providing opportunities for higher potential learners. We are a deaf-friendly school and have highly successful specialist support for hearing impaired students. Our Deaf Support base provides exceptional support to our hearing impaired learners; currently we have 23 on roll.

## Accommodation

The school benefits from state-of-the-art science research and visual arts facilities. Our sports facilities are exceptional, and we offer professional tennis coaching.

All rooms are accessible by wheelchair. There are two lifts reaching all floors with a disabled toilet on each floor (four in total). There are also specially designed shower and changing room facilities for wheelchair users. Every classroom has adjustable height desks.

## Pastoral care

Our values underpin our home-school agreement and support the school in developing an outstanding student culture. We regularly recognise our students for displaying exceptional 'Above and Beyond' characteristics. This recognition culminates in an annual whole school awards ceremony.

In addition to exceptional year team leaders, our pastoral teams include highly skilled non-teaching pastoral leaders who develop personalized support for every child.

## Extracurricular activities

We encourage all students to participate in activities outside their timetabled lessons through our enrichment programme. This provides opportunities for students to broaden their learning and explore and develop new talents and skills.

We currently run sessions in sport, music, drama, art, photography, science, computing, technology, debating, dance, and languages, as well as entering students for the Duke of Edinburgh's award scheme. There are opportunities to explore London and we also offer trips across the UK and overseas. Our careers education has been externally rated as 'Gold Standard'.



## School information

### St Paul's Way Trust School

125 St Paul's Way, London E3 4FT

Tel: 020 7987 1883

Website: [www.spwt.net](http://www.spwt.net)

**Executive Headteacher:** Phil Akerman

**Age range:** 4-19

**Phase of education:** All through school

**Gender:** Mixed

**Type of school:** Academy - University Schools Trust

**Day/Boarding school:** Day

**Religious character:** None

**Specialism:** Science and art

**Selection:** Partial selection on music aptitude

**Total number of pupils:** 1,813

### Admission arrangements

**Number of places available for year 7:** 240

**Oversubscription criteria:** See page 12

**Waiting list arrangements:** See page 15

**Previous year's applications:** See page 9

**Previous year's appeals:** 4 upheld from 105 lodged

### Open days

**Mornings:** Monday 19 to Wednesday 21 September, 9.15-11am

**Evenings:** Thursday 22 September, 4-6.30pm

### Uniform and general

**Uniform:** See school website

**Exam results:** See school website

**Ofsted reports:** Go to [www.reports.ofsted.gov.uk](http://www.reports.ofsted.gov.uk) and type the school name in search

**School policies:** See school website

**We are a vibrant and thriving 11-19 mixed comprehensive school. In our most recent inspection by Ofsted, we were judged as Outstanding in all areas.**

Swanlea has built an enviable reputation for outstanding academic success and we are very proud of what our students achieve, attributing this to our supportive staff, parents, carers and hard-working governors.

At Swanlea, we want to see all students become highly skilled learners, achieving excellent standards and leading fulfilling and exciting lives. Our commitment to equal opportunities is reflected in all aspects of school life where we welcome young people from all cultures, backgrounds and beliefs. We celebrate these in our shared Swanlea values: respect, aspire and achieve.

### School organisation

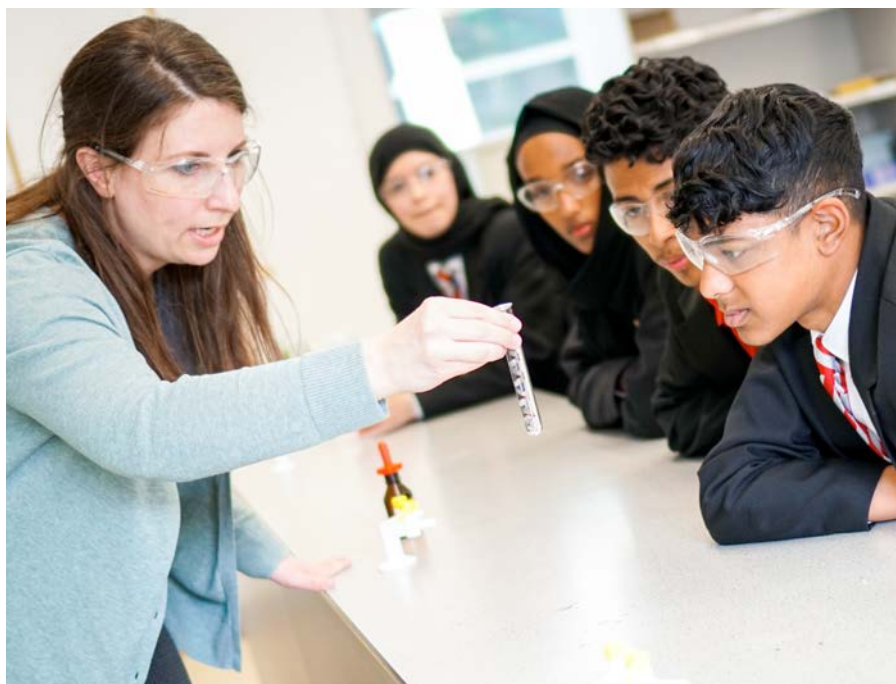
Swanlea students receive outstanding learning and teaching opportunities. Students and teachers alike enjoy lessons, which make for a positive and purposeful atmosphere. Students are supported by a varied and diverse curriculum which meets the needs of all within a high-quality learning environment.

Swanlea School is in the top 15 per cent of schools and colleges in the country. Additionally, our progress and attainment scores are consistently above the national and borough average.

Since 2008, Swanlea has been an 11-19 secondary school offering education at all Key Stages up to university entrance. Ofsted judged our sixth form to be Outstanding. Students have gone on to study courses such as law at Oxford, aeronautical engineering at Imperial College London and medicine at King's College London.

### Learning support

Swanlea is a fully inclusive school, committed to the achievement of all of our pupils. Our building is fully accessible and we welcome pupils with physical



disabilities. We have a range of learning interventions and programmes to support the achievement of all students, coordinated by our inclusion faculty.

All students with special educational needs are provided with specific, targeted support. Together with our extensive provision for our more able students, including City mentoring opportunities, masterclasses and residentials, we are committed to supporting excellence.

Our facilities include fully accessible lift access to all floors and five accessible toilets, one of which includes a fully accessible wet room and hoist.

### Environment

The school has fantastic facilities. We benefited from the multi-million pound Building Schools for the Future programme, which created our new block allowing for exciting learning spaces, modern furniture and outstanding technology.

We also have fully equipped laboratories, technology workshops and drama and dance studios. Students benefit from newly landscaped outdoor spaces and two full-size floodlit multi-use games areas. We also hold our whole school annual sports day at Mile End Stadium and have regular use of Whitechapel Sports Centre.

### Pastoral care

Our pastoral care, welfare and support for students have been judged as Outstanding. Your child has access to a wide range of support and guidance to help them achieve.

The form tutor is the first point of contact and is responsible for the welfare of your child throughout their time at Swanlea. The pastoral team is led by a learning coordinator and a deputy learning coordinator who, together with parents, carers and staff, supports your child's welfare and the school's learning ethos.

We aim to make the transfer from primary to secondary education as smooth as possible by:

- Visiting pupils whilst still at primary school and discussing their needs with class teachers.
- Inviting pupils to an individual admissions interview with parents/carers in the summer term before they start.
- Inviting primary school children and parents to use our exciting facilities and to take part in taster lessons.
- Inviting primary school children to watch and participate in productions, summer school, sporting events, and concerts at Swanlea.
- Running information sessions that introduce parents and carers to life at secondary school.
- Working with our East 1 Schools' Partnership of seven local primaries, which helps us support and empower parents and pupils, raising achievement and supporting the transition from primary to secondary school.

The most successful schools are those that work in partnership with parents. We value the central contribution that parents/carers make in supporting children's achievement. We have developed very effective home/school links to help support you and your child.

We have a parents' association, which is central to school life while our parent governors play a significant role in the success of the school. We maintain contact through:

- newsletters
- parent evenings
- open days
- parent forums
- weekly headteacher open drop-in meetings.

## Extracurricular activities

We believe that effective partnerships are fundamental to our pupils' success. Strong learning partnerships are forged between pupils, parents and teachers through close links with local primary schools, community organisations and local and international businesses.

We care for the wellbeing of our staff and our students and make sure that we invest in our community. Our extracurricular activities have included badminton, boxing, archery, enterprise initiatives with the Bank of America, Merrill Lynch and Deloitte and other local, city-wide and international businesses. We also have a strong music and art department showcased through our numerous concerts and exhibitions.

Our Saturday morning school provides additional learning opportunities for students in all subjects.

The school holds the Investors in People award, Gold Healthy Schools award, the Equalities award, an Artsmark Silver, the British Council Gold Standard International award and Advanced Status for out-of-hours learning provision.



## School information

### Swanlea School

31 Brady Street, E1 5DJ

Tel: 020 7375 3267

Email: [officeadmin@swanlea.co.uk](mailto:officeadmin@swanlea.co.uk)

Website: [www.swanlea.co.uk](http://www.swanlea.co.uk)

**Headteacher:** Brenda Landers

**Age range:** 11-19

**Phase of education:** Secondary

**Gender:** Mixed

**Type of school:** Community

**Day/Boarding school:** Day

**Religious character:** None

**Specialism:** None

**Selection:** Non-selective

**Total number of pupils:** 1,250

### Admission arrangements

**Number of places available for year 7:** 210

**Oversubscription criteria:** See page 12

**Waiting list arrangements:** See page 15

**Previous year's applications:** See page 9

**Previous year's appeals:** 2 upheld from 28 lodged

### Open days

**Family Fun Day:** Saturday 17 September, 11am-3pm

**Mornings:** Wednesday 21, Friday 23, Monday 26, Thursday 29 September, 9.15-10.15am

**Evenings:** Wednesday 5 October, 4-6.30pm

### Uniform and general

**Uniform:** See school website

**Exam results:** See school website

**Ofsted reports:** Go to [www.reports.ofsted.gov.uk](http://www.reports.ofsted.gov.uk) and type the school name in search

**School policies:** See school website

**Wapping High School is a high performing and innovative co-educational school. We deliver an engaging all-round education that supports academic achievement whilst developing the skills, knowledge and qualities students need to be well equipped for life in the modern world.**

As a Free School, we follow the National Curriculum although we are distinct from other schools in that we innovate aspects of the provision such as in our dedicated enrichment programme, in our balance of traditional and project based learning opportunities and in our focus on using digital learning strategies in line with our underlying commitment to developing young people's technical skills.

We are extremely proud of the diverse nature of our student body and celebrate their differences which enriches our school community. This strong community feel coupled with the opportunity to experience a well-designed, appropriate and interesting curriculum that makes learning more relevant, engaging and that inspires our young people to take more ownership of their learning, which can lead to greater success.

At Wapping High, alongside a firm commitment to working closely with parents, we pride ourselves on setting high standards here for both students and staff. We are committed to ensuring that every child can achieve their full potential both academically and personally and continue to benefit from the school's partnerships with local and national organisations across the performing arts, sport, technical, business, and educational domains.

### School organisation

Wapping High School provides a broad, balanced and engaging curriculum designed to prepare students well for our rapidly changing world. Students study the full range of national curriculum subjects at Key Stage 3 and at Key Stage 4 can select from a wide range of GCSEs and BTECs.

The curriculum blends high-quality, imaginative learning approaches supported by a rich, digital environment with a rigorous focus on inspiring our young people to make excellent progress.



Students typically take significant responsibility for their own learning, take pride in their work and are keen to support each other in achieving outstanding outcomes. Partnerships with universities and businesses further inspire students to aim high in whatever field they wish to pursue.

In Years 7 and 8, as well as following the core curriculum of English, Maths and Science, students study the full range of English National Curriculum subjects. Year 7 and 8 students also enjoy 'Workshop Wednesdays' in which humanities and the STEAM subjects (Science, Technology, Engineering and Maths applications) are explored through project learning.

Wapping High also links and shares our project learning outcomes with other learning through REAL projects which is a design for learning that connects deep subject content with real world problem solving. REAL projects enable all students to create extraordinary work that matters. This means that learning is enquiry based and develops high level thinking skills in a real-world context.

Our students also get to share their project learning experiences internationally with our partners in the USA and India. Students are also encouraged, and where necessary financially supported, to buy

their own Google Chromebook to help them collate and share their ideas across a wide range of partner audiences.

Our excellent enrichment programme on Thursday afternoons is very popular with students. Enrichment experiences are delivered in themes: Cultural, Creative, Technical, and Sport. The enrichment programme allows students to explore their other interests outside of the National Curriculum and Thursday afternoons are always a highlight for everyone.

In both Workshop Wednesdays and in our enrichment programme, a range of transferable skills are developed including time management, collaboration and problem solving skills while also gaining an in-depth understanding of those subjects. Guest speakers and collaborators from other partner institutions and public life regularly participate with projects, activities and enrichment to help really bring the whole experience to life.

In summary, Wapping High School is fully committed to developing confident, skilled and self-motivated learners who are committed to be collaborative, independent and digitally literate young people.

Wapping High is a happy school where everyone really does matter.

## Learning support

At Wapping High School, we support and value the abilities of all our learners and aim to provide every student with proper access to our broad and balanced curriculum. We remain fully committed to providing excellent learning support for all groups across the school. We have a dedicated Special Educational Needs Coordinator (SENCO) along with a team of Learning Support Assistants to provide all special education needs support.

## Environment

Our school building is an innovative 21st century learning space which provides us with a great deal of flexibility for students to make full use of. In line with our ethos, the school building has a mix of specialist and open plan learning spaces.

The accommodation includes industry standard technical and practical areas, a cafeteria and social spaces. The school also draws on external facilities to enrich and extend the performing arts and sporting options which give access to a range of external venues.

## Pastoral care

We are a small and caring school, with a strong sense of community where each child is known personally. Students are divided into Houses to encourage interaction across the age groups and to create a safe and caring environment. Tutor groups within each House have a Form Tutor to support and guide students both academically and socially. Families form an active part of the school community and are continuously involved with their child's education.

Every aspect of school life is guided by a clear ethical code, to foster social awareness and help students understand and meet with confidence the challenges of a diverse and changing society and the world of work. The attitude to learning policy sets high expectations of behaviour for learning in the school. Each house is led by a pastoral leader who provides outstanding pastoral care and support to ensure that students develop into confident, well-educated, resilient young adults.

## Extracurricular activities

As was mentioned in the School Organisation section above, students are actively encouraged to engage fully with the school's enrichment programme on Thursday afternoons which gives every student the opportunity to shape and pursue a range of activities which they get to choose. The school also organises a wide range of extracurricular trips to museums, art galleries, theatre's, sporting events, exhibitions, careers events, or to one of our university partner campuses. There is also a hugely popular annual international trip to countries including France, Switzerland and Spain. Reward trips also take place every term for those students with the best attendance and highest number of house points.



## School information

### Wapping High School

153-157 Commercial Road, E1 2DA

Tel: 020 3597 3670

Email: [admissions@wappinghigh.org](mailto:admissions@wappinghigh.org)

Website: [www.wappinghigh.org](http://www.wappinghigh.org)

**Headteacher:** Gary Nelson

**Age range:** 11-16

**Phase of education:** Secondary

**Gender:** Mixed

**Type of school:** Free school

**Day/Boarding school:** Day

**Religious character:** None

**Specialism:** None

**Selection:** Non-selective

**Total number of pupils:** 420

### Admission arrangements

**Number of places available for year 7:** 84

**Oversubscription criteria:** See school website

**Waiting list arrangements:** See school website

**Previous year's applications:** See page 9

**Previous year's appeals:** 0

### Open days

**Mornings:** Wednesday 21, Wednesday 28 September & Wednesday 5 October, 9-10am

**Evenings:** Wednesday 21 September, 4.30-6.30pm

### Uniform and general

**Uniform:** There is no school uniform

**Exam results:** See school website

**Ofsted reports:** Go to [www.reports.ofsted.gov.uk](http://www.reports.ofsted.gov.uk) and type the school name in search

**School policies:** See school website

**east London Arts and Music (eLAM) is a games design, music, film and television college for 16-19 year olds. We focus on developing the next generation of young, creative, entrepreneurial talent.**

Graded 'outstanding' by Ofsted in all categories, ELAM's trainees work and learn alongside the creative industries' leading organisations and professionals. Real world projects, work placements and expert mentors develop the technical and personal skills needed to succeed at university and within the workplace. ELAM is totally committed to the successful progression of its trainees on to these pathways.

Underpinning the development of our trainees and the practice of our staff are ELAM's values of collaboration, excellence, innovation, integrity and drive. These values align ELAM with our partners and are embedded in everything we do. We try to live and breathe our values through our behaviours and see them as the key to success for all.

## School organisation

The course at ELAM has been designed with creative industries such as Universal Music UK, YouTube and Creative Assembly so that all trainees have the skills, knowledge and portfolio of work they need to enter the workplace when they finish their studies. There are three main courses at ELAM: music, games design and development and film and television production. Trainees on these courses will take the UAL level 3 extended diploma, which is the equivalent to 3 A Levels in UCAS points and contact time.

In addition to either of these qualifications, all trainees study maths and English as the skills developed in both are critical for success in the creative industries. The level at which trainees study maths and English depends on their starting level upon entry. We offer A levels, AS levels, level 3 qualifications and GCSEs in both maths and English.

Alongside these rigorous qualifications, all trainees get extensive and direct access to the professional industries through weekly masterclasses, a unique mentoring programme and unparalleled work experience opportunities.



## Learning support

All schools in Newham and Tower Hamlets have a similar approach to meeting the needs of young people with special educational needs, and are supported by the local authority to ensure that all young people, regardless of their specific needs, make the best possible progress while in school.

ELAM will meet the needs of trainees with the following special educational needs and disabilities (SEND):

- communication and interaction
- cognition and learning
- social, mental, and emotional health
- sensory/physical.

Our inclusion team, led by our special educational needs coordinator (SENCO), provide specific support for learners with SEND.

## Accommodation

ELAM is a day school based in: Maltings Close, Bromley-by-Bow, E3 3TA

## Pastoral care

ELAM has a pastoral team and a SENCO who provide a thorough support system for all trainees.

ELAM runs a tutor system so all trainees and parents have a tutor as a first point of contact for any issues.

## Extracurricular activities

ELAM offers extensive extracurricular activities in all key subject areas.



## School information

**East London Arts and Music College**  
45 Maltings Close, E3 3TA  
**Tel:** 020 7515 2159  
**Email:** [info@elam.co.uk](mailto:info@elam.co.uk)  
**Website:** [www.elam.co.uk](http://www.elam.co.uk)

**Headteacher:** Matt Sheldon  
**Age range:** 16-19  
**Phase of education:** Further education  
**Gender:** Mixed  
**Type of school:** Free school  
**Day/Boarding school:** Day  
**Religious character:** None  
**Specialism:** Music, film and television, games design  
**Total number of pupils:** 300

## Admission arrangements

**Number of places available:** 300  
**Oversubscription criteria:** n/a  
**Waiting list arrangements:** n/a  
**Previous year's applications:** n/a  
**Previous year's appeals:** n/a

## Open days

**Mornings:** See school website  
**Evenings:** See school website

## Uniform and general

**Uniform:** See school website  
**Exam results:** See school website  
**Ofsted reports:** Go to [www.reports.ofsted.gov.uk](http://www.reports.ofsted.gov.uk) and type the school name in search  
**School policies:** See school website

**“Visiting London East Alternative Provision and speaking to young people, I was struck by how proud they are to be in school and learning. Dedicated staff and a positive environment can transform children’s lives and it is this kind of inspiring alternative provision that I want to see across the board”** – The Rt Hon Gavin Williamson MP, Secretary of State for Education



**“The (school) leadership team has maintained the good quality of education in the school since the last inspection. ...effective leadership ensures that all staff follow a common purpose.”** – Ofsted January 2018

## School organisation

Any parent who is considering LEAP, as an appropriate school to meet the needs of their child must discuss this with their child’s current school, in the first instance. Visits to the school are welcome.

We achieve our vision statement – securing futures – by:

- Accurately assessing learning abilities
- Identifying an individual learning pathway for each student
- Securing re-integration, back into mainstream, when possible
- Ensuring all pupils make expected or better progress in their chosen pathway across all subjects
- Securing a post-16 placement for all students.

## Who attends LEAP?

Students who:

- Would benefit from smaller class sizes and higher teacher-student ratios.
- Are awaiting a place in a mainstream school.
- Have not been able to follow a traditional secondary school curriculum and need to undertake this as a pathway to further education or training.
- Have been out of education for a period of time.
- Are not able to access the curriculum due to behaviour, illness, special educational needs and disabilities (SEND), personal circumstances, etc.
- Have very poor attendance due to medical or physical conditions.

## Learning support

Our mission is to equip our students with the qualities that they will need for success whatever their destination. To achieve this we put high value on:

- Knowing our students, their strengths, their needs and their progress.

- Personalised planning, monitoring and reviewing intervention and progress on a regular basis.
- Positive and respectful relationships.
- High-quality teaching.
- Comprehensive information, support, advice and guidance.

## Accommodation

LEAP currently operates across two main sites, all located within Tower Hamlets, around 10 minutes by car and 20 minutes walking from one another.

Our Key stage 3 and 4 centre on Tollet Street – a modern, three-storey, purpose-built facility – is our biggest centre. It has 16 classrooms, smaller teaching rooms/offices, a large assembly/dining hall and a full-sized sports hall.

Our Post-16 provision on Globe Road at LEAP offers a Post-16 provision for students who wish to re-take their English and Maths exams and would like to continue with vocational studies such as Child Care, Engineering,

# London East Alternative Provision (LEAP)

# 3

PE, Bike Maintenance, Hospitality & Catering or Business Studies. We also offer weekly work placements with a variety of providers such as the NHS, a local nursery or a professional catering training kitchen and restaurant in London Bridge.

## Key Stage 3

The vast majority of Key Stage 3 students follow our Reintegration Programme based at our Third Base Centre. The reintegration curriculum is designed to cover all of the competencies required for a successful school career – reflecting the issues raised by schools, when referring students to us.

The curriculum follows a two-week cycle, with students working on a themed project. Work on literacy and numeracy skills is built into the activities for every day. Opportunities are also built in for students to achieve nationally recognised accreditation.

The Royal London Hospital School has been part of LEAP since 2001. It provides a quality learning experience and environment for all school age children admitted.

## Pastoral Care

Our staff are committed to supporting young people in engaging with learning, making progress and achieving. We value every student as being unique and our values promote self-reflection, individual social and emotional development and the acquisition of new skills and knowledge.

Staff are skilled not only in planning and delivering high quality learning programmes, but also motivating young people to engage with the activities and tasks they are presented with.

Unlike a mainstream school, our main success indicators are not examination and test results but are firmly anchored in what happens to a student after they leave us. This does not mean that examination success and the gaining of qualifications are not important to us. These things are very important and we invest in activities designed to ensure students achieve the best possible qualifications while on roll with us.

“Coming here has changed me a lot; it has made me realise a lot of things about myself. This place has been the best thing to happen to me.” – Student 2018

## Extracurricular activities

Our activities range from self-defence to flower arranging and everything in between.

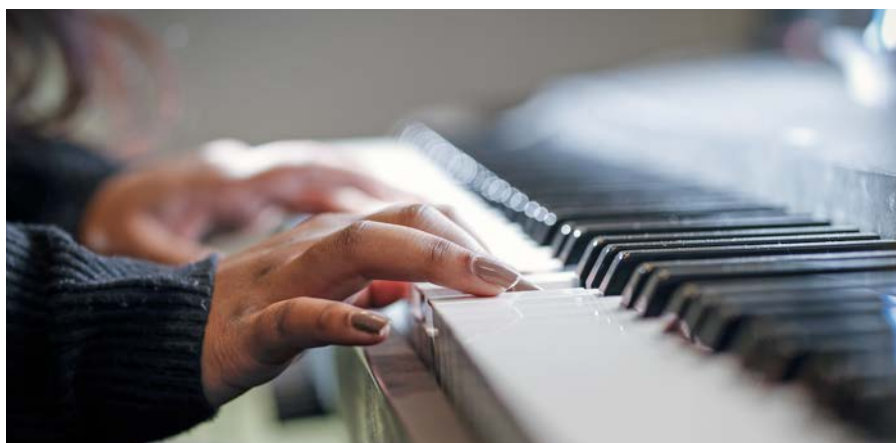
The focus is to build student self-confidence, help students develop important life skills and broaden student horizons.

## Pupil Outcomes

Many of our pupils attend the school for less than a year, some for just a few months. Despite this, staff and pupils are proud of our achievements.

Art, business studies, IT, additional science, music, and PE all achieved a 100 per cent pass rate and are all above the national and London average.

**Please see the school website for further information:**  
[www.londoneastap.org.uk](http://www.londoneastap.org.uk)



## School information

**London East Alternative Provision**  
21 Tollet Street, London E1 4EE  
**Tel:** 020 7791 7720  
**Email:** [admin@londoneastap.org.uk](mailto:admin@londoneastap.org.uk)  
**Website:** [www.londoneastap.org.uk](http://www.londoneastap.org.uk)

**Headteacher:** Astrid Schon  
**Age range:** 11-19  
**Phase of education:** Secondary  
**Gender:** Mixed  
**Type of school:** Maintained - alternative provision  
**Day/Boarding school:**  
**Religious character:** None  
**Specialism:** None  
**Total number of pupils:** 200

**Mulberry UTC is a vibrant, diverse school where young people study hard, achieve excellence and go on to make a positive difference in the world.**

At Mulberry UTC, we value and celebrate the diverse skills, talents and aspirations of all members of our school community. Our students achieve excellence in academic, technical and vocational qualifications and go on to secure places at top universities.

We are proud to be part of the Mulberry Schools Trust and to be supported by leading industry partners including Bank of America, Barts Health NHS Trust, the British Film Institute, Goldsmiths University of London and the National Theatre.

We prepare young people for 21<sup>st</sup> century careers, ensuring they are equipped with the academic, technical and creative skills required for university study, apprenticeships and skilled employment.

We believe that every young person has a right to the best possible educational opportunities. We aim to create a learning environment where every student can achieve and succeed. We are committed to meeting the educational and social needs of all students, and providing them with the support they need to flourish.

We offer GCSEs and A-levels alongside technical and vocational qualifications, project-based learning and industry experience. Our students learn in industry-standard facilities co-designed by our employers and partners. They also benefit from work experience and industry placements.

Our House system provides excellent pastoral care and a sense of competition and fun that enhances students' experience of school.

We also offer fantastic trips, rewards and access to the Mulberry STEM Academy in partnership with Mercedes-Benz Grand Prix Ltd. Students also participate in global programmes such as Model United Nations and Mulberry Youth Conferences.



## School organisation

Students join Mulberry UTC either at the start of Year 10 or at the start of Year 12. Those students who join the school in Year 10 are guaranteed a place in our over-subscribed Sixth Form.

At Key Stage 4, students follow a broad and balanced curriculum including GCSEs in English and English Literature, Maths, double Science, Humanities and Religious Education. Our KS4 students have a choice of two technical and vocational courses including digital media, performing arts, business and health and social care. The core curriculum at KS4 also includes PSHE, digital learning, global citizenship, and physical education.

Students joining us for Sixth Form choose from a wide range of courses, depending on their interests and aspirations. We have also introduced our T-Level in Health qualification and further T-Levels will be offered in the future. Most students choose to combine academic, technical and vocational qualifications, to ensure they make the most of Mulberry UTC's unique facilities and our partnerships with leading employers.

### The A-level subjects on offer are:

- Biology
- Chemistry
- English Literature
- Film Studies
- Maths
- Politics
- Psychology
- Sociology
- Criminology

### The technical and vocational courses on offer at Level 3 are:

- Health and Social Care
- Applied Science
- Business and IT
- Creative and Digital Media
- Performing and Production Arts
- T-Level Health (September 2022)
- T-Level Media, Broadcast and Production (September 2023)
- T-Level Business (September 2023)

Most of our Level 3 courses are offered as Cambridge Technicals, which are equivalent to A-levels. These qualifications, designed through consultation with employers and higher education providers, are ideal for students who aspire to professional careers within their chosen specialist fields.

We also offer Level 2 Health and Social Care, for those students who are not yet ready for Level 3, subject to numbers.

# Mulberry University Technical College (UTC) (14-19)

# 3

## Learning support

At Mulberry UTC, all students are provided with the support they need to ensure they can reach their full potential.

Our curriculum provides stretch and challenge for higher achieving students, so they can excel in their chosen qualifications and progress to university or an apprenticeship.

Students with special educational needs and/or disabilities are supported by a team of specialist staff and benefit from working within our fully accessible building.

## Environment

Mulberry UTC students benefit from working within our state-of-the-art building, a stimulating and creative learning environment with custom-designed, professional-standard facilities.

We have specialist science labs and two professional health suites, including a simulated hospital ward where our health and science students learn how to work with patients. This is invaluable preparation for those students wishing to go on to study medicine, nursing or a related field.

Our creative industries students work within our beautiful 250-seat theatre, modelled on the Dorfman theatre at the National Theatre. They also benefit from a studio theatre, a TV and film studio, a recording studio, a radio production suite, an animation studio, digital editing suites, dressing rooms, costume workshops and a CAD suite.

## Pastoral care

We are extremely proud of the excellent pastoral care offered to our students. Our pastoral system reflects a strong commitment to supporting students' personal development, achievements and progress. Our House system helps provide students with a sense of belonging and reflects the school's ethos, which is built upon care, kindness, respect, tolerance and a celebration of diversity.

Our Heads of House and form tutors work closely with students, parents and teachers to ensure students receive the advice, guidance, encouragement and support they need. All students are expected to follow our behaviour and uniform policy, with a strong emphasis on attendance, punctuality, attitude and participation.

## Extracurricular activities

We offer an extensive range of extracurricular activities, creating space for students to develop broader horizons and to learn transferable skills such as communication, negotiation and leadership.

As well as lunchtime and after-school clubs, there are a wide range of trips and visits for students to participate in. Students also complete work experience and industry placements relevant to their specialist courses.

## Admissions Process

Mulberry UTC operates its own admissions process, in line with Tower Hamlets' fair access protocol. The timeline for admissions is published on the school's website.



## School information

### Mulberry UTC

64 Parnell Road, E3 2RU

Tel: 020 3137 7024

Email: [info@mulberryutc.org](mailto:info@mulberryutc.org)

Website: [www.mulberryutc.org](http://www.mulberryutc.org)

Acting Principal: Ms Sally Brian

Age range: 14-19

Phase of education: Secondary

Gender: Mixed

Type of school: University Technical College

Day/Boarding school: Day

Religious character: None

Specialism: Science, Health, Business, IT, Digital Media, Theatre

Selection: Non-selective

Total number of pupils: 380

### Admission arrangements

Number of places available for year 10: 60

Number of places available for year 12: 240

Oversubscription criteria: See school website

Waiting list arrangements: See school website

Previous year's applications: n/a

Previous year's appeals: n/a

### Open days

Thursday 20 October, Thursday 19 January &

Thursday 16 March, 4.30-6.30pm

### Uniform and general

Uniform: See school website

Exam results: See school website

Ofsted reports: See school website

School policies: See school website

**The college's mission is to create opportunities through inspiring teaching and learning, by developing students' skills, knowledge, curiosity, resilience and employability.**



Tower Hamlets College is part of New City College, a general further education institution with a turnover of approximately £100 million. It is based over two sites in Tower Hamlets, east London. The college was rated 'Good' by Ofsted in December 2021. Our vision is to become an outstanding provider of education, training and skills by 2025.

The college aims to create opportunities for students to fulfil their potential, facilitating progression to employment, self-employment, higher-level study, and improved economic prosperity.

On 1 August 2016, the college merged with Hackney Community College to form New City College. Redbridge joined the group on 1 April 2017 and Epping Forest College joined on 1 August 2018 and Havering College

and Sixth Form joined in August 2019 to form the second largest college in London, with campuses across the five boroughs. Each college retains its local identity and campuses in each borough.

## School organisation

- A Levels (21+ A levels subjects)
- GCSE re-takes (Science, maths & English)
- 14-16 new arrivals and New Horizons
- Over 100+ vocational qualifications in Computing & Digital Technology; Business & Accounting; Construction (Plumbing, Electrical installations & Carpentry); Applied Science; Health & Social Care; Early Years; Sport; SEND; Creative Arts (Film, TV and Art & Design) Media and Graphic Design and Apprenticeships.
- ESOL courses for 16-18 students.

## Learning support

There is a dedicated and large additional learning support team at the college providing:

- in-class support
- specialist teaching support
- assistive technology
- qualified and specialist dyslexia support staff
- 1-2-1 study support
- independent study areas – the learning zone.

## Locations

- A Levels at the Attlee Academy – Specialist Centre at Arbour Square
- Vocational courses at Poplar Campus
- 14-16 Arbour Square.

## Pastoral care

The college has a well-developed tutorial programme, which includes target setting and parent evenings. There is also a well-established disciplinary policy.

## Extracurricular activities

There are a wide range of enrichment activities, including a preparation for university and employment programmes and an Oxford and Cambridge universities preparation programme.

The A level programme has its own enrichment award scheme with a focus on employability and university progression.

The college has its own football team and runs a series of activities from the Poplar campus.

The college works in partnership with the local businesses including Banking, Insurance, Retail and Construction to support students to complete work experience.

# New City College - Tower Hamlets (14-19)

# 3



## School information

### New City College - Tower Hamlets

Poplar High Street, London E14 0AF

Tel: 020 7510 7510 / 0330 135 9000

Website: [www.ncclondon.ac.uk/tower-hamlets](http://www.ncclondon.ac.uk/tower-hamlets)

Headteacher: Dr Alison Arnaud

Age range: 14-19 & 19+

Phase of education: Tertiary

Gender: Mixed

Type of school: Further education college

Day/Boarding school: Day

Religious character: None

Specialism: 14-16, GCSE, A levels and vocational

Selection: By interview

Total number of pupils: 3,500

### Admission arrangements

Number of places available: 700

Oversubscription criteria: Contact the college directly

Waiting list arrangements: Contact the college directly

Previous year's applications: 3,000

Previous year's appeals: n/a

### Open days

Mornings: By appointment

Evenings: Adult courses only

### Uniform and general

Uniform: 14-16 only

Exam results: 94.7 per cent pass rate

Ofsted reports: Go to [www.reports.ofsted.gov.uk](http://www.reports.ofsted.gov.uk) and type the school name in search

School policies: See school website

**South Quay College (SQC) provides alternative education for 14 to 16-year-olds in Tower Hamlets and neighbouring boroughs.**



South Quay College was founded in 2012 by an east London charity, City Gateway Trust. We aim to deliver programmes that enable positive sustained outcomes in education and employment, and to have a transformative impact on individuals and the wider community.

Our programmes are designed to support students to prepare for adulthood. Whilst we care deeply about academic results, personal development is equally important.

Our approach is attachment-aware and trauma-informed, and we base our interactions with the young people on the provision of a safe space and relationships of trust and mutual respect. Students are offered a vocational pathway for the academic year, comprised of three equally important parts:

- **1:1 coaching and support** – every student is assigned a Pastoral Lead during their time at SQC.
- **Qualifications that help students to acquire skills for employment** – including English and maths.
- **SMSC** – Students engage in a range of activities to develop their self-confidence and transferable skills for life.

### School organisation

Young people are usually referred to our Key Stage 4 provision by their current school or by the local authority. We provide a highly supportive environment for young people who would benefit from an alternative to mainstream education, with a strong focus on personal development.

#### Curriculum – vocational subjects

Most students will follow two L1 / L2 qualifications:

- Building Skills
- Hair and Beauty
- Hospitality and Catering
- Sports Leaders
- Art
- Humanities

#### Curriculum – core subjects

- English (GCSE and/or functional skills)
- English Literature (GCSE)
- Maths (GCSE and/or functional skills)
- Science (GCSE and/or functional skills)

#### Additional core subjects

- SMSC (not accredited)
- PE (not accredited)
- Careers Education

#### SMSC

Students have opportunities to undertake a range of activities, both inside and outside the classroom. We want students to learn about themselves, grow in confidence and develop transferable skills for life. There are also opportunities to develop an awareness of the wider community and their role in society.

Through project-based learning and regular interaction with visitors and partner organisations, we aim to expose young people to a wide range of important themes and issues from British values and employability, to mindfulness and volunteering.

For further details, please visit our website or follow us on social media: [www.southquaycollege.org.uk](http://www.southquaycollege.org.uk) @SouthQuayEd

## Learning support

South Quay College's model is a graduated approach for learners with a wide range of needs, taking a holistic view that focuses equally on social, emotional, mental health and educational development. We have many years' experience working with learners who have additional needs and maintain a high ratio of staff to learners. The majority of classes have additional in-class support.

Our inclusion team provides targeted support to students with EHCPs and students with higher needs, according to the Special Educational Needs and Disabilities (SEND) Code of Practice. We work in partnership with the local authority and a wide range of external agencies to ensure that students receive the appropriate support.

We undertake an initial and diagnostic assessment of all students to determine the most appropriate pathway.

## Environment

SQC has a number of dedicated vocational training spaces. These include:

- art room
- beauty salon
- catering room
- construction workroom
- gym
- media room and recording studio
- sports hall
- science lab
- Thrive multi-sensory area

## Pastoral care

Each student is assigned a pastoral lead (PL) with whom they meet regularly for coaching sessions. Our staff work closely with students, parents, carers and external professionals to ensure we help students to overcome any barriers or challenging circumstances they may face.

## Additional support

We work with a range of partners in the community to ensure that our students can access additional support such as counselling and substance misuse advisors.

## Extracurricular activities

Our programmes include industry specific trips and visiting speakers to give young people a real-life insight into the world of work. Coaching and other initiatives also help young people to identify their strengths and explore their interests.

## School information

### South Quay College

32 Mastmaker Court, Mastmaker Road, London E14 9UB

Tel: 020 3727 6300

Website: [www.southquaycollege.org.uk](http://www.southquaycollege.org.uk)

**Headteacher:** Martin Nirsimloo

**Age range:** 14-16

**Phase of education:** KS4

**Gender:** Mixed

**Type of school:** Free schools - alternative provision

**Day/Boarding school:** Day

**Religious character:** None

**Specialism:** n/a

**Selection:** n/a

**Total number of pupils:** 75

### Admission arrangements

**Number of places available:** 75

**Oversubscription criteria:** n/a

**Waiting list arrangements:** n/a

**Previous year's applications:** n/a

**Previous year's appeals:** n/a

### Open days

By appointment

### Uniform and general

**Uniform:** See school website

**Exam results:** See school website

**Ofsted reports:** Go to [www.reports.ofsted.gov.uk](http://www.reports.ofsted.gov.uk) and type the school name in search

**School policies:** See school website

# 4

## Guide to applying online

To start your online application please visit:

**[www.eadmissions.org.uk](http://www.eadmissions.org.uk)**

You can also use the link from the local authority's website:

**[www.towerhamlets.gov.uk/schooladmissions](http://www.towerhamlets.gov.uk/schooladmissions)**



### Registration

Go to **[www.eadmissions.org.uk](http://www.eadmissions.org.uk)**

This will take you to the welcome page – click on 'Create a new account' – see figure 1.

If you have previously applied using the online system you will be able to log in without the need for registration.

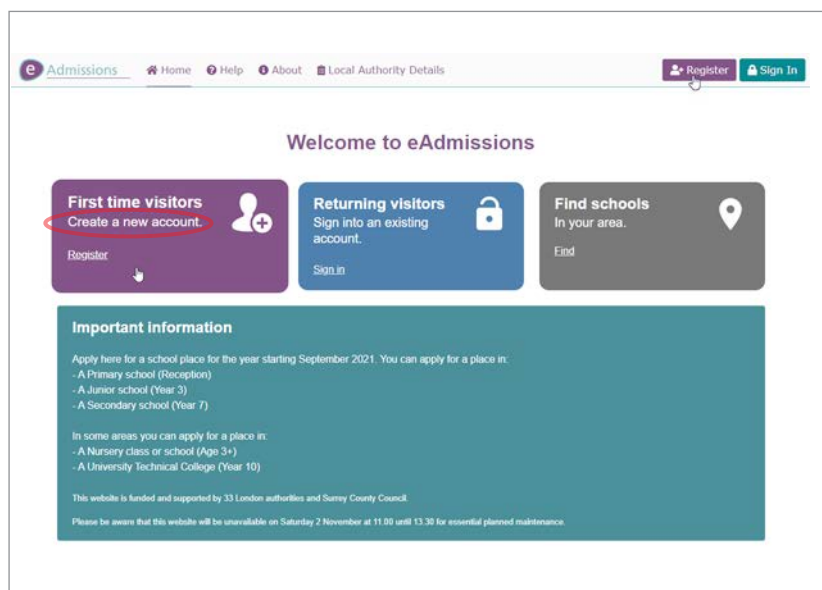


Figure 1

Then enter your details and click "Continue" – see figure 2.

You will then need to create a password (please note the password for future reference).

You will receive confirmation that your USO account has been set up and will be sent a reminder of your username – see figure 3.

You will need to validate your email address by clicking on the link in the email that is sent to you.

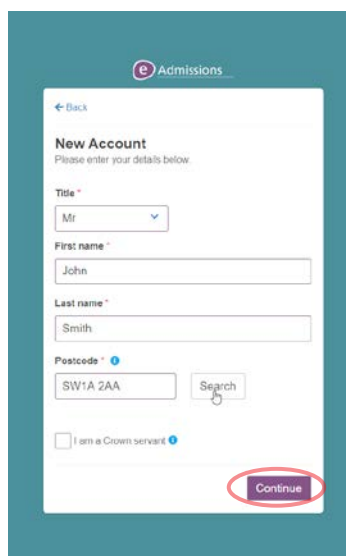


Figure 2

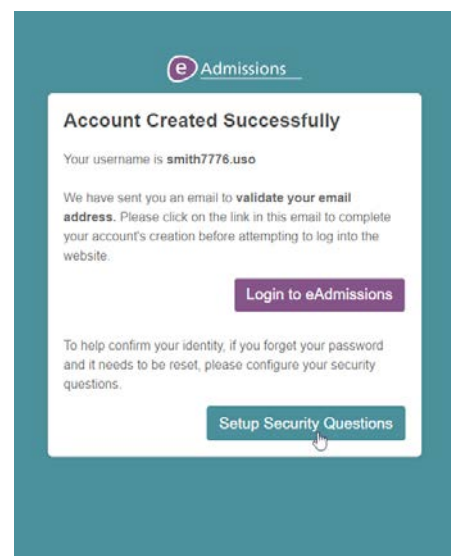


Figure 3

## Start an application

You can now log in with your email or username and will be directed to the home page – see figure 4.

From here you can make a new application, edit an existing application, view the details of any application already submitted and view the outcome of your application once it is available.

Click on 'Start Application' to begin.

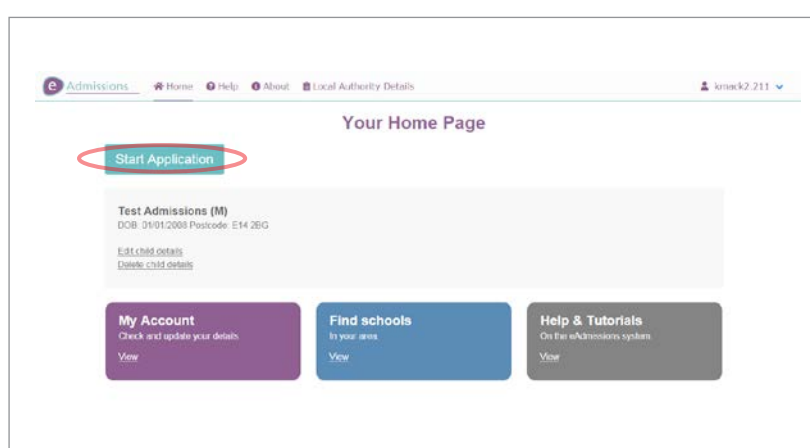


Figure 4

## Stage 1 – Child details

Fill in your child's details and then click 'Save and continue' – see figure 5.

Figure 5

## Stage 2 – School preferences

Here you can apply for up to six schools, in Tower Hamlets and/or other boroughs. You should select the schools in order of preference, with the first selected school being your first preference and so on.

You can add a school in one of three ways:

1. By selecting the borough of the school using the dropdown list and then selecting the school.
2. By selecting your school from its location on a map.
3. By searching for the school by using keywords.

Click on 'Continue' – see figure 7.

For each school selected you will be asked to provide the following information:

1. Sibling information – you should click on the relevant box and fill in the details if your child has a brother or sister already at the school.
2. Exceptional medical or social reasons – you should tick the relevant box if there are medical or social reasons for your child to attend a particular school. You will be required to provide documentary evidence to support this.
3. Additional reasons – this is for you to give additional reasons for wanting a particular school.

Figure 6

Figure 7

# Guide to applying online

# 4

## Stage 3 – Check and submit

When you have entered all the required information, you will be prompted to check that the information is accurate and then asked to submit application – see figure 8.

Even if you submit it straight away, you can still make changes later, right up until the closing date.

Details Preferences Submit Documents

← Back

### Check & submit application

Please check the information you have supplied and then use the 'Submit Application' button at the bottom of the page to submit your application for processing by your home Local Authority shown below:

**TOWER HAMLETS**  
The London Borough of Tower Hamlets  
020 7364 5000  
school.admissions@towerhamlets.gov.uk

Child details	
Child name	A Child
Address	MILBERRY PLACE TOWN HALL, 8 CLOVE CRESCENT LONDON

#### Declaration

By submitting this form I agree to the following:

- I have read the admissions guidance issued by the Local Authority for each school I have selected.
- I wish to apply for a place at each of the schools named above and have listed these in my order of preference.
- I will keep the Local Authority informed of any change of circumstances (e.g. change of address) and failure to do so may make this application invalid or lead to the offer of a place being withdrawn.
- I understand that the Local Authority may take steps to verify any information relating to this application.
- I understand that any false or deliberately misleading information given on this form and/or supporting information may make this application invalid or lead to the offer of a place being withdrawn.
- I understand that the Local Authority where I live is under a duty to protect the public funds it administers and may therefore share the information I have provided in this application within the Local Authority and with other bodies administering public funds, for the detection and prevention of fraud.

☐ I have read and accepted the above declaration

**Submit application**

Figure 8

## Confirmation

Once you have submitted an application, you will see the confirmation page, with a reference number. Please keep your reference number for any enquiries. You will also be sent an email to confirm that your application has been submitted.

It is advisable to print a copy of your application for your information.

Note: The last submitted application will be processed as your final application. If you have applied online, please do not fill out a paper application.

Thank you for applying online.

### Checklist

**Before submitting this form, you should:**

- Read the admissions policy
- Listed the schools in my order of preference
- Completed all relevant school information
- Checked whether any of the schools are oversubscribed
- Made a note of any evidence supporting my application
- Made a note of any evidence supporting my application

#### Declaration

By submitting this form I agree:

- I have read the admissions policy
- I wish to apply for a place at each of the schools named above and have listed these in my order of preference
- I will keep the Local Authority informed of any change of circumstances (e.g. change of address) and failure to do so may make this application invalid or lead to the offer of a place being withdrawn
- I understand that the Local Authority may take steps to verify any information relating to this application
- I understand that any false or deliberately misleading information given on this form and/or supporting information may make this application invalid or lead to the offer of a place being withdrawn
- I understand that the Local Authority where I live is under a duty to protect the public funds it administers and may therefore share the information I have provided in this application within the Local Authority and with other bodies administering public funds, for the detection and prevention of fraud

### Your application has now been submitted!

You have been sent a confirmation email for your records. If you haven't received the email please check your junk/spam folder.

Please ensure you read the email carefully for any additional requirements e.g. links to supplementary information forms.

Application reference: 211-2020-09-L-000037  
Version: 1  
Application date: 22/07/2020 12:46  
Closing date: 31/08/2020 23:59  
Outcome date: 15/09/2020 14:00

Please click the Home button to go to the home page.

If you wish to upload the documents requested by your home Local Authority, please click the Upload documents button now. Alternatively, you can attach them before the closing date from 'Your home page' by selecting 'Attach a document'.

**Home** **Upload documents**

Figure 9

## Secondary schools

### A Bishop Challoner Catholic Federation of Schools

Voluntary Aided Boys' and Girls' Comprehensive Schools  
352 Commercial Road, London E1 0LB  
Tel: 020 7791 9500

### B Bow School

Community Mixed Comprehensive School  
44 Twelvetreces Crescent  
London E3 3QW  
Tel: 020 7536 5525

### C Canary Wharf College Crossharbour

Mixed Free School  
Selsdon Way, London E14 9GL  
Tel: 020 3383 6100

### D Central Foundation Girls' School

Voluntary Aided Girls' Comprehensive School  
25-33 Bow Road, London E3 2AE  
Tel: 020 8981 1131

### E George Green's School

Voluntary Controlled Mixed Comprehensive School  
100 Manchester Road, London E14 3DW  
Tel: 020 7987 6032

### F Langdon Park School

Community Mixed Comprehensive School  
Bright Street, London E14 0RZ  
Tel: 020 7987 4811

### G London Enterprise Academy

Mixed Free School  
81-91 Aneurin Bevin House,  
Commercial Road, London E1 1RD  
020 7426 0746

### H Morpeth School

Mixed Comprehensive School  
Portman Place, London E2 0PX  
Tel: 020 8981 0921

### I Mulberry Academy London Dock

Mixed Academy School  
10 Virginia Street, London, E1W 2AD

### I(2) Temporary site:

Wellclose Square, London E1 8HY  
(Former Shapla Primary School site)

### J Mulberry Academy Shoreditch

Mixed Academy School  
Gosset Street, London E2 6NW  
Tel: 020 7920 7900

### K Mulberry School for Girls

Academy Girls School  
Richard Street, Commercial Road,  
London E1 2JP  
Tel: 020 7790 6327

### L Mulberry Stepney Green Maths, Computing and Science College

Mixed Academy School  
Ben Jonson Road, London E1 4SD  
Tel: 020 7790 6361

### M Oaklands School

Community Mixed Comprehensive School  
Old Bethnal Green Road  
London E2 6PR  
Tel: 020 7613 1014

### N Stepney All Saints CofE Secondary School

Voluntary Aided Mixed Comprehensive School  
Stepney Way, London E1 0RH  
Tel: 020 7790 6712

### O St Paul's Way Trust School

Mixed Academy School  
125 St Paul's Way, London E3 4FT  
Tel: 020 7987 1883

### P Swanlea School

Community Mixed Secondary Comprehensive School  
31 Brady Street, London E1 5DJ  
Tel: 020 7375 3267

### Q Wapping High School

Mixed Free School  
153-157 Commercial Road,  
London E1 2DA  
Tel: 020 3597 3670

## 14-19 provision

### 1 East London Arts & Music

45 Maltings Close, E3 3TA  
Tel: 020 7515 2159  
Please visit [www.elam.co.uk](http://www.elam.co.uk)  
Email: [info@elam.co.uk](mailto:info@elam.co.uk)

### 2 London East Alternative Provision (LEAP)

21 Tollet Street, London E1 4EE  
Tel: 020 7791 7720

### 3 Mulberry University Technical College

64 Parnell Road, E3 2RU  
Tel: 020 3137 7024

### 4 New City College - Tower Hamlets

14-19 College  
Poplar High Street, London E14 0AF  
Tel: 020 7510 7510 / 0330 135 9000

### 5 South Quay College

14-16 Provision  
32 Mastmaker Court, Mastmaker Road,  
London E14 9UB  
Tel: 020 3727 6300

## Registered independent secondary schools

### R Darul Hadis Latifah

1 Cornwall Avenue, London E2 0HW  
Tel: 020 8983 3663  
Mixed school, age range 11-20 years

### S Jamiatul Ummah

56 Bigland Street, London E1 2ND  
Tel: 020 7790 7878  
Boys' school, age range 11-16 years

### T London East Academy

London Muslim Centre  
46 Whitechapel Road, London E1 1JX  
Tel: 020 7650 3070  
Boys' school, age range 11-16 years

### U London Islamic School

18-22 Damien Street, London E1 2HX  
Tel: 020 7265 9667  
Boys' school, age range 11-16 years

### V Madani Secondary Girls' School

Myrdle Street, London E1 1HL  
Tel: 020 7377 1992  
Girls' school, age range 11-18 years

### W Mahazirul Uloom London

241-243 Mile End Road, London E1 4AA  
Tel: 020 7702 8533  
Boys' school, age range 11-16 years

### X River House Montessori School

Unit C Great Eastern Enterprise Centre  
3 Millharbour, London E14 9XP  
Tel: 020 7538 9886  
Mixed school, age range 3-16 years

### Y The Complete Works Independent School

3rd Floor, Universal House  
88-94 Wentworth Street, E1 7SA  
Tel: 020 7377 0280  
Mixed school age range 5-18

## Special schools

Places at these schools are authorised by the Special Educational Needs (SEN) Panel following a statutory assessment or annual review. Further advice is available from the special educational needs section on 020 7364 4880.

### S1 Beatrice Tate School

41 Southern Grove, London E3 4PX  
Tel: 020 8983 3760

### S2 Ian Mikardo High School

60 William Guy Gardens, Talwin Street,  
London E3 3LF  
Tel: 020 8981 2413

### S3 Phoenix School

49 Bow Road, London E3 2AD  
Tel: 020 8980 4740

### Bowden House School

Firle Road, Seaford, East Sussex, BN25 2JB  
Tel: 01323 893 138

# Priority geographical areas for secondary transfer applications

4



## A South Wapping

Priority admission to Mulberry and Stepney Green schools is given to pupils in the following areas:

- i South of Cable Street and royal Mint Street
- ii west of Butcher row
- iii North of the River Thames
- iv East of Mansell Street

## B West Bethnal Green

Priority admission to Swanlea School is given to pupils:

- i South of Quaker Street
- ii West of Brick Lane
- iii North of Whitechapel High Street
- iv East of Middlesex Street

### Useful contacts

#### The Admissions Service

Town Hall, Mulberry Place  
5 Clove Crescent  
London E14 2BG

Tel: 020 7364 5006

Fax: 020 7364 4311

Email: [school.admissions@towerhamlets.gov.uk](mailto:school.admissions@towerhamlets.gov.uk)

Website:

[www.towerhamlets.gov.uk/schooladmissions](http://www.towerhamlets.gov.uk/schooladmissions)

#### Special Educational Needs

Tel: 020 7364 4880

Email:

[specialeducational.needs@towerhamlets.gov.uk](mailto:specialeducational.needs@towerhamlets.gov.uk)

#### Tower Hamlets Family Information, Advice and Support Service (formally Parents Advice Centre)

Tel: 020 7364 6489

### Useful websites

- [www.eadmissions.org.uk](http://www.eadmissions.org.uk)
- [www.goodschoolsguide.co.uk](http://www.goodschoolsguide.co.uk)
- [www.gov.uk/dfe](http://www.gov.uk/dfe)
- [www.ofsted.gov.uk](http://www.ofsted.gov.uk)
- [www.parentview.ofsted.gov.uk](http://www.parentview.ofsted.gov.uk)

### Information and Support for Families

#### The Family Information Service (FIS)

The FIS provides free, impartial information and advice on a comprehensive range of services for children, young people and their families. As well as a Brokerage Service to support parents/carers in finding suitable childcare.

Tel: 020 7364 6495

Email:

[fis@towerhamlets.gov.uk](mailto:fis@towerhamlets.gov.uk)

You can also access information online at Tower Hamlets Local offer: [www.localoffertowerhamlets.co.uk](http://www.localoffertowerhamlets.co.uk)

Working together – giving families a voice

#### Tower Hamlets Parent and Carer Council

The Parent and Carer Council (the PCC) is Tower Hamlets' main family forum. The PCC provides a platform where parents can share information about education, health and community safety in the borough and collectively help shape the services that are available to families in the borough.

For further information and to find out how to join the PCC:

Visit: [www.towerhamlets.gov.uk/parentcouncil](http://www.towerhamlets.gov.uk/parentcouncil)  
Email: [parentcouncil@towerhamlets.gov.uk](mailto:parentcouncil@towerhamlets.gov.uk)

or call the Family Information Service on:  
Tel: 020 7364 6495

### Free access to computers at our Idea Stores

Please check the website [www.ideastore.co.uk](http://www.ideastore.co.uk) to keep up to date on which services are available.

#### Idea Store Bow

1 Gladstone Place  
Roman Road  
London E3 5ES

#### Idea Store Canary Wharf

Churchill Place  
London E14 5RB

#### Idea Store Chrisp Street

1 Vesey Path  
East India Dock Road  
London E14 6BT

#### Idea Store Watney Market

260 Commercial Road  
London E1 2FB

#### Idea Store Whitechapel

321 Whitechapel Road  
London E1 1BU

### Contact details for surrounding London authorities

#### Barking and Dagenham

Tel: 020 8215 3004

[www.lbdd.gov.uk/admissions](http://www.lbdd.gov.uk/admissions)

#### Camden

Tel: 020 7974 1625

[www.camden.gov.uk](http://www.camden.gov.uk)

#### City of London

Tel: 020 7332 1002

[www.cityoflondon.gov.uk](http://www.cityoflondon.gov.uk)

#### Greenwich

Tel: 020 8921 8043

[www.royalgreenwich.gov.uk](http://www.royalgreenwich.gov.uk)

#### Hackney

Tel: 020 8820 7000

[www.hackney.gov.uk](http://www.hackney.gov.uk)

#### Islington

Tel: 020 7527 5515

[www.islington.gov.uk](http://www.islington.gov.uk)

#### Lewisham

Tel: 020 8314 8282

[www.lewisham.gov.uk](http://www.lewisham.gov.uk)

#### Newham

Tel: 020 8430 2000

[www.newham.gov.uk](http://www.newham.gov.uk)

#### Redbridge

Tel: 020 8708 3139

[www.redbridge.gov.uk](http://www.redbridge.gov.uk)

#### Southwark

Tel: 020 7525 5337

[www.southwark.gov.uk](http://www.southwark.gov.uk)

#### Westminster

Tel: 020 7745 6433

[www.westminster.gov.uk](http://www.westminster.gov.uk)

For information and guidance on school attendance, school travel support, free school meals and school clothing grant please visit [www.towerhamlets.gov.uk/schooladmissions](http://www.towerhamlets.gov.uk/schooladmissions)



